

DONALDA

Business & Tourism Guide

2020/21

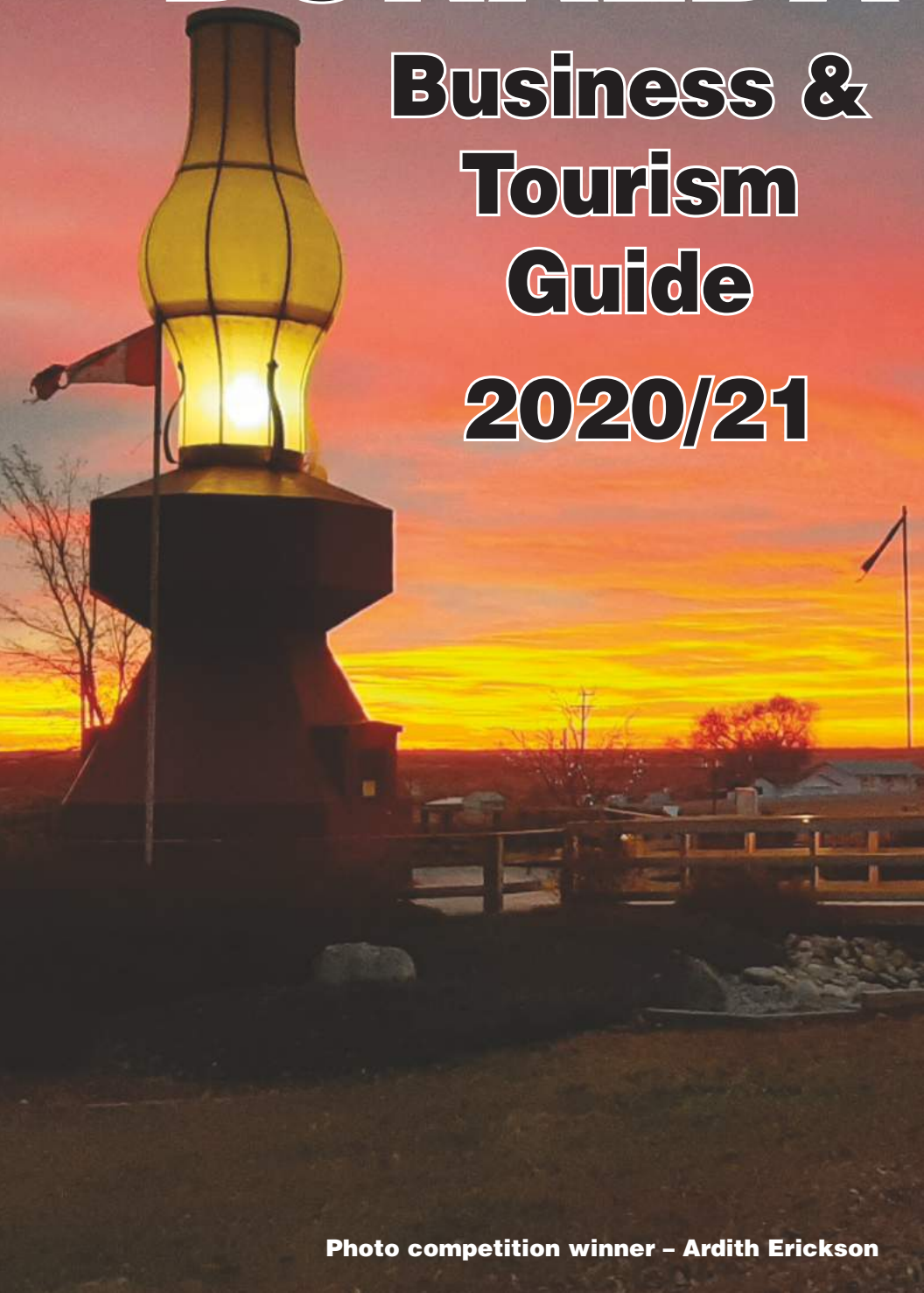
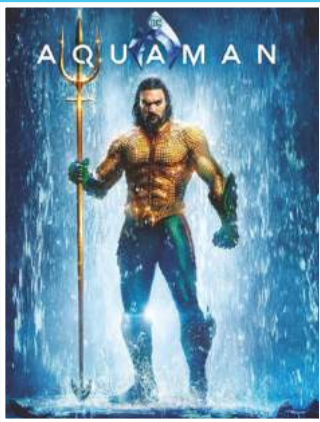


Photo competition winner – Ardith Erickson



Date:
Friday, May 29, 2020

Movie: dusk
(approximately 9:30 p.m.)



Date:
Friday, August 21, 2020

Movie: dusk
(approximately 9:30 p.m.)

Location: Willow Canyon (formerly Donalds ski hill)

Cost: \$10.00 per person or \$25.00 for a carload

Contact: 403-883-2943

FEATURING A
20' x 40'
OUTDOOR MOVIE
SCREEN LOCATED
IN THE SCENIC
DONALD COULEE
BADLANDS

FULL CONCESSION

*Buttered Popcorn, Hot Dogs
Candy & Drinks*

Gates and concession open at 7 p.m.
Come and explore the badlands before the movie.

Welcome Everyone To

The Village of Donalda

Donalda is located in the heart of East Central Alberta overlooking the picturesque Meeting Creek Coulee and the Donalda Badlands. This Coulee is considered to have been a major travel route for early aboriginal civilizations and many stone artifacts have been found in the area. In recent years, a hiking trail has been developed from the Village onto publicly owned lands that covers the top rim to the bottom of the Coulee and the Badlands. These lands exist in their original state and offer the hiker an experience of natural flora and fauna, as well as fantastic sight-seeing. There are picnic tables located along the rim of the coulee, all with wonderful views.

Donalda is proud of its history and has invested in preserving this history. A world famous museum offers a large collection of native artifacts from earlier generations, dinosaur bones, a display of over 5000 local artifacts from the homestead era, and a huge collection, exceeding 1100 in number, of oil burning lamps some as old as the 1600's. The flagship of this collection is the World's Largest replica lamp, standing 42 feet tall, overlooking the Coulee and Badlands and is lit every night. Many historic buildings still exist in Donalda and these add to the overall tourist attractions of the Village.

Donalda is a very vibrant community with events occurring throughout the year, all being managed by a large group of local volunteers and enjoyed by community members and visitors alike. Community members also enjoy access to a modern school which offers Pre School and Kindergarten to Grade 9.

We welcome new residents and offer affordable real estate in a fully serviced village, as well as a quiet and safe lifestyle in a community where you can become involved and make a difference.

The Village also encourages new business ventures for those who have creative and entrepreneurial skills and offers a 5 year tax incentive plan for new business and residential structures.

Whether you are a visitor or a new resident of our community, we hope you will enjoy your stay.

*Bruce Gartside, Mayor
Village of Donalda*



The Village of Donalda is located 25 miles northeast of Stettler, 18 miles east of Bashaw and 45 miles southeast of Camrose. Its location on the coulee rim gives the visitor wonderful views and proximity to a whole range of activities for every season of the year. Donalda is 15 minutes from Buffalo Lake with its many beaches and campgrounds including Boss Hill and Pelican Point.

BUSINESS DIRECTORY

Business	Phone #	Contact
* Alberta Prairie Steam Tours	403-742-2811	Bob Willis
ATB – Donalda Branch	403-883-0000	Donna Dahl
* Ben Van Haga Trucking	403-323-0060	Ben Van Haga
* Big Knife Construction	403-740-9469	Bob Halseth
* Big Knife Outfitters	403-740-6699	Cody Cassidy
* BookersVille General Store/Cafe	1-587-998-5195	Pam & Doug Booker
* Century 21 - Candor Realty Ltd.	403-742-4424	Fran Snowden
Cold Creek Carpentry	403-741-4581	Troy Auton
* Coulee Trading Company	403-883-2760	Dan Knudtson
County of Stettler	403-742-4441	
* Custom Cut & Fabricating	403-883-2362	Lane Damberger
Divine Wisdom	403-588-2843	Cori Fuller
Donalda Floor Curling	403-883-2993	Ken Overacker
* Donalda Hutterite Colony	780-878-4490	Kenneth Hofer
Donalda Post Office	403-883-2121	Jody Daleug
* Donalda Tavern & Inn	403-883-2043	Dean Norman
* East Central Alberta Heritage	403-742-3997	Bob Willis
* Echo Ridge Seeds	403-883-2503	Derwin & Kirby Massey
* Echoglen Gardens	403-883-2849	Roy & Beth Fulton
* Hair on the Hill plus Waxing	403-883-2469	Mary Mueller
Hammer Down Construction	403-740-6467	Travis Halseth
Hang em High Exteriors	403-740-2472	Nolan Shepherd
Healing Hands/Voxx Socks/ Massage Therapy	403-883-0005	Norma Rehman
* Heathers Yarn Haven	780-781-0075	Heather Taylor
* <i>See our display ad in guide</i>		

BUSINESS DIRECTORY

Business	Phone #	Contact
Interior Colours	403-740-5997	Becky Clement
* John's Vending Ltd.	403-883-2287	Danny Bernard
Klatty's Welding Inc.	403-740-5762	Tracey Klatt
Larry's Handyman Service	403-883-2950	Larry Dahl
* Larry's Hot Oil Service	403-740-6408	Larry Donald
Marila Environmental Inc.	403-883-2922	Marty Larson
* NRW (No Regrets Welding)	403-323-0440	Chad Ramstad
Red Cross Training & Instructor	403-741-4587	Cindy Auton
Rick Shepherd Construction	403-741-8433	Rick Shepherd
* Rose City Memorials	403-883-2566	Wade Montgomery
Russell's Hauling Ltd.	403-740-5518	Russell Speed
* Stettler Independent	403-742-2395	
* Teresa's Foods	403-883-2780	Teresa Kneeland
	403-743-1234 (Stettler)	
The Re-Coverly Room	403-883-2274	Jim & Trudy Bailey
The Wooden Nickel Café	403-883-2044	Dean Norman
* Todds Welding	403-883-2570	Lorne Todd
Tornado Combustion		
Technologies	403-883-2400	Charles Lacroix
Tundra Environmental &		
Geotechnical Drilling Ltd.	403-742-6601	Ray & Miriam Weibel
* Vikse Family Farm	403-883-2461	Dave & Tracee Vikse
* Village of Donalda	403-883-2345	
Wrangler Welding	403-588-2847	Curtis Fuller

* *See our display ad in guide*

COMMUNITY ORGANIZATIONS

Organization	Phone #	Contact
ABRA (Alberta Barrel Racing Assoc.)	403-883-2721	Becky Dixon
Battle River Rural Crime Watch Assoc.	403-742-7613	Paul McKay
* Donalda & District Ag Society	403-883-2212	Ron Borchuk
<i>For information on renting any of the following facilities please call 403-883-2222 or Beth at 403-741-8196</i>		
Donalda Equestrian Centre	Donalda Community Hall	
Donalda Campground	Willow Canyon & Chalet	
* Donalda & District Community Promotion Society	403-883-2943	Bruce Gartside
* Donalda & District Musuem	403-883-2100	Tessalee Dubitz
Donalda Animal Rescue	403-883-2870	Myra Gauvreau
* Donalda Cemetery Club	403-883-2377	Holly Komishke
* Donalda Community Arts Society	403-883-2100	Tessalee Dubitz
* Donalda Coulee Friendship Club	403-883-2244	Building
<i>Rentals</i>	403-883-2381	Marlene Conibear
	403-883-2555	Judy Dinsmore
* Donalda Curling Club	403-883-2511	Building
	403-883-2469	Mike Mueller
Donalda Floor Curling	403-883-2993	Kenn Overacker
* Donalda Library	403-883-2665	Naomi LaBelle
Friends of the Library	403-883-2943	Bruce Gartside
* Donalda Light Riders	403-740-5997	Becky Clement
Donalda Minor Baseball	403-430-0883	Julie Siemens
* Donalda School	403-883-2280	Warren Aspenes
Donalda School Parent Council	403-740-6654	Jen Charles
Donalda Fire Department		
Fire Permits must be obtained from the County of Stettler 403-742-4441		
* Sharon Evangelical Lutheran Church	403-883-2025	BJ Norman
Spruce Coulee Community Centre	403-883-2469	Mike Mueller
Willow Canyon Hiking Trail	403-883-2943	Bruce Gartside

* *See our display ad in guide*

EMERGENCY NUMBERS

Alta Gas	1-866-222-2067
ATCO Electric	1-800-668-5506
Donalda Village Office	403-883-2345
Fire, Medical, RCMP	911

COMMUNITY EVENTS

April 2020 - April 2021

May 9, 2020	Mother's Day Poker Rally in Memory of Roberta Rouse	403-740-5997
May 29, 2020	Drive-In Movie " <i>American Graffiti</i> "	403-883-2943
June 6, 2020	Donalda Ranch Rodeo	403-741-8196
July 1, 2020	Canada Day Festivities	403-883-2943
August 3-8, 2020	Living Hope Family Bible Camp	403-883-2566
August 8, 2020	Donalda Coulee Show and Shine	780-781-0075
August 21, 2020	Drive-In Movie " <i>Aquaman</i> "	403-883-2943
August 22-23, 2020	Donalda Light Horse Show	403-741-8864
September 26-27, 2020	Willy Bronze Poker Rally	403-740-5997
October 24, 2020	Donalda Ag. Fall Supper	403-741-8196
December 6, 2020	A Village Christmas Santa Parade • Christmas Market • Santa's Shopping Centre	403-883-2943
February 1-7, 2021	Donalda Curling Bonspiel	403-883-2469
February 15, 2021	Family Day Winterfest	403-883-2943
February 16, 2021	Shrove Tuesday Pancake Supper	403-883-2555
April 22, 2021	FCSS Volunteer Supper	

DONALDA RECYCLING TRAILER



The proceeds from the recycle trailer help to fund many community societies.

The Community of Donalda hosts many events and is still thriving thanks to the hard work of our volunteers.

DONALDA COULEE FRIENDSHIP CLUB

Come to the Drop-In Centre
Main Street, Donalda

- * **Social afternoon** - Saturdays - 1:30 p.m. - 3:30 p.m. (Sept. - June)
- * **Pancake Breakfast**
10 a.m. - 12 noon, second Sunday of the month (Sept. - June)

For Catering or Facility Booking Phone
President - Judy Dinsmore ~ 403-883-2555
Secretary/Treasurer - Marlene Conibear ~ 403-883-2381

Donalda Public Library

“Committed to the Community”

Offering:

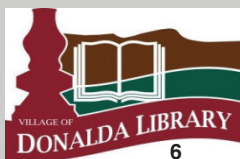
Books, Local History Books, Movies
Printing Services, Programs,
Free Wi-Fi & Computer Services



Visit us today!



Located in the Village Complex, 5001 Main Street 403-883-2665
www.donaldalibrary.prl.ab.ca e-mail: donaldalibrary@prl.ab.ca



Access more library items
for free, sign up now!

ME Alberta
Wide
Borrowing
LIBRARIES



Donalda Gallery for the Arts



At the crossroads of creation and the appreciation of art, is the Donalda Gallery for the Arts. It is located in the historic 1928 Imperial Bank of Canada Building with a commanding view of the Meeting Creek Valley. Today, the high ceilings of the bank hall provide a wonderful gallery space for the changing exhibits of art by professional, emerging and beginning artists from Donalda and surrounding area.

The Gallery for the Arts is managed by the Donalda Community Arts Society. They are dedicated to the exploration, creation and preservation of art in any form from canvas to fabric, metal to wood and all mediums in between.

This year's art exhibits will feature Bashaw Art Club the first two weeks of July.

Check website for other exhibits.

Please check facebook at Donalda Gallery for the Arts



Continuing Education

The Donalda Community Arts Society is continually looking into hosting art lessons in all mediums. If you are interested in learning or teaching a discipline, please contact us.



**403-883-2100
Box 72
Donalda, AB
T0B 1H0**





Donalda and District

Volunteers Cultivating Community

Events

- Mother's Day Memorial Poker Rally
- Willy Bronze Poker Rally
- Ranch Rodeo
- Light Horse Show
- Harvest Supper
- Country Christmas Market

Follow us on Facebook

Contact Us At:

Box 248
Donalda AB T0B 1H0
email: donaldaagsociety@gmail.com

For Facilities & Info:

Call 403-741-8196

Agricultural Society

www.donaldaagsociety.com

& Sustaining Agricultural Relations

Equestrian Centre

Heated Riding Arena, Kitchen, Outdoor arena & Pens

Available for clinics, group & individual rental

Affordable year membership or pay by usage

Community Hall

Split level recently renovated upstairs & down

Kitchen facilities & equipment

Stage & light system

Willow Canyon

120 Acres of Coulee Badlands & Hiking Trails

Heated chalet with kitchen

Outdoor lights for night activities

Campground

Power hookups with washroom & shower facilities

Available for group or individual rental

Located next to the Equestrian Centre

Donalda & District Museum

The Donalda & District Museum was established in 1979 with a large collection of artifacts given to the village by local residents Don & Beth Lawson. Today, it remains our mission to maintain, preserve and exhibit artifacts to future generations for their education and enjoyment.



Our world-famous museum houses over 1,000 lamps, making it one of the largest lamp collections in the country. Most lamps are coal-oil burning from the late 1800s and early 1900s. Some lamps are hundreds of years old, few dating back to the 1500s. Many portray the daily lives of the early settlers in Alberta.



Other artifacts range from building tools to kitchen wares, household and personal items, and community memorabilia. Some artifacts are unique & rare, like a mouse-proof cabinet patented in 1881, home made mousetrap, shaving equipment, hair curling irons, a set of Norwegian wedding spoons, coins and tokens.

Western Canada in the mid-19th century was a land of great opportunities but also a land of loneliness, hardships, & danger. Nevertheless, many chose to brave these concerns & settle here.

The Whitford Collection depicts one such pioneer family. Donald Whitford, a Métis, spoke five languages and put them to use as an interpreter, freighter, trader, and surveyor. He came west in 1855 and in 1879 married a native woman, Peggy Paul. Together they had 12 children, many still living in the Donalda Area. The museum houses their personal leather and quill art.



Unlocking the Past...Lighting the Future

The Museum also manages three historical buildings in the Village: The Donalda Co-operative Creamery, the Imperial Bank of Canada, & the Canadian Railway Station.



The Bank, originally the Bank of Montreal, was built in 1928 and became the Imperial Bank of Canada in 1932. It was open until 1997, and has since been converted into the Donalda Gallery of the Arts, holding art shows, and displays.

The Railway station a CN 4th Class building was relocated from Vandura, SK to Donalda in 1992. The original Donalda station was built in 1911, but was torn down.

The Creamery began in 1924 but was replaced by the present building in 1954 until it closed in 1987. The equipment was left just as it was on its last day of operation. The Creamery was noted for its "Donalda Maid Butter" which won many awards across Canada. The creamery is



a provincial heritage Resource.



When Donalda began the new millennium the World's Largest replica of a Coal-Oil Burning Lamp was erected, complementing the museum and its lamp collection. The lamp was a model of community

volunteerism. When it was completed on July 1st, 2000, a new era with a tourism-based economy began.

Today, we are proud of our accomplishments & the efforts to develop events & attractions in our community. The Museum reflects the whole history of the community & the district, from the prehistoric past to the present.

Contact Information:

Box 179, Donalda, AB T0B 1H0
email: info@donaldamuseum.com
Phone: 403-883-2100
www.donaldamuseum.com

Village of DONALDA

P.O. Box 160
5001 Main Street
Donalda, AB
T0B 0H0

403-883-2345

www.village.donalda.ab.ca



HONOURING OUR PAST

The village of Donalda was originally named Eidsvold by the Norwegian settlers who first founded the community. In 1912, the village adopted the name Donalda after Sir Donald A. Mann, a Canadian National Railway "Master Builder" and visionary.

Donalda's economy is deep rooted in agriculture with an abundance of land and livestock. These roots are reflected throughout the village with the various pieces of machinery and equipment that grace our land. Donalda is built on history and recognizes its importance. From our world renowned museum to the historically designated creamery, from the classy 1932 Imperial Bank building to the restored 1909 CN Railway Station, we invite you to visit a piece of the past.

But no village can survive only by living in the past. Donalda is proud of the strong community spirit that...

EMBRACING OUR PRESENT

The village of Donalda is partnered with Canadian Badlands as we are the northern most point of the Canadian Badlands. This partnership allows us to further develop our tourism industry, as visitors come from afar and near to see the world's largest working oil lamp replica and the renowned museum it represents. We also work to attract naturalists to the relatively new hiking trail that takes you along the coulee rim and down into Willow Canyon. We believe in providing services to the community. The Donalda Public Library operated primarily by volunteers is a member of the Parkland Regional Library. By providing children's programs, yearly presentations at the school of storytellers/authors, public access computers, internet services, and access to an extensive selection of books and other materials, the library continues to support literacy for all generations.

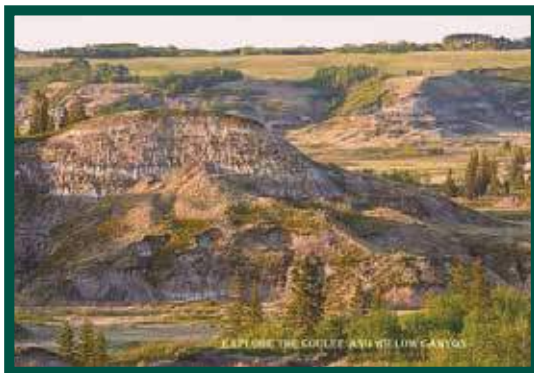


Donalda is a wonderful place to raise your family, crime is virtually non-existent. Our school has come a long way from the one room school house in the 1900s to the state of the art institute that any parent would love to send their playschool to grade 9 children to.

Our cultural roots are reflected in the over fifty active businesses that are located

in the village and surrounding area. These businesses offer antiques, art, bank, grocery, hotel, café, gardening, transportation, and more.

The Village on the rim of the coulee and the farms around it are the work of many hands and minds through the years. The town's location overlooking the Meeting Creek Coulee and badlands give us a distinct edge. Opportunities abound for artists, photographers, hikers, naturalists, and entrepreneurs. The natural beauty of the area inspires us to embrace the present and reach for the stars while ...



SHAPING OUR FUTURE

As Donalda has aged, she has grown strong, stood the test of time and put down strong roots. We are busy making plans, looking further into the light. We are prepared for future residential and commercial development;

land is available. We are always exploring options on revitalizing our main street core. We are working closely with our many volunteer groups as we work together shaping our future. We are committed to providing a safe, nurturing, friendly, affordable and attractive community for this generation and future generations to come as we honour the past, embrace the present and shape the future.

The Village of Donalda has SERVICED LOTS FOR SALE

Located just off Bond Street, these are close to the school and priced to sell. Contact the Village for more information.

Donalda School

Quality Education in a Caring Environment



Start Right Playschool

Our Start Right Playschool program is a literacy enriched play structured program for three and four year olds. In this fun environment, students embrace their natural curiosity, while building relationships with others.

Academics

Literacy and numeracy are the two focal points of our academic program. Students have daily access to literacy supports in whole and small group instruction. The staff is currently planning for the delivery of a numeracy enhancement program to support students at all skill levels.



Fine Arts

Our school boasts a robust art, drama, and music programs. The K-9 Christmas musical has quickly emerged as a popular community celebration.



Nutrition and Wellness

As part of our focus on nutrition, once a week our junior high students work with a professional caterer to prepare nutritious and delicious meals for the entire school.

Athletics

Athletics are a special part of student life at Donalda School. Despite being small, our teams are competitive in both CARA and CWAJHAA. Donalda School teams include: volleyball, cross country running, basketball, curling, badminton, and track and field.



Building Community

Thrilling Thursdays is one of the way we build community throughout the school. All students participate in multigraded tribes to complete fun activities while learning about cooperation, sharing, leadership, and community spirit.

DONALDA & DISTRICT COMMUNITY PROMOTION SOCIETY

Mission

To promote and market Donalda and area to others and ourselves by:

Hosting community events like Family Day, Canada Day, Show and Shine and the Village Christmas. Providing a welcome package to new residents.

Publishing the Business and Tourism Guide annually;
Acting as a liaison between groups.

Members

If you would like to make a difference in our community and have some fun doing it, we would love to hear from you. We are always looking for volunteers and new members. Membership is Free!

Please feel free to phone us at 403-883-2943

Donalda Business and Tourism Guide is published by the Donalda Community Promotion Society with the financial support of the Advertisers.



**Box 3, Donalda, AB T0B 1H0
403-883-2377**



Donalda Curling Club

Mixed Curling League
(January to March)

All interested players welcome
from beginners to professionals.

Annual Curling Bonspiel
takes place in February.

For more info, please call
403-883-2469

RENTALS

\$100.00 - Day

Lobby Rentals all year round

Curling is Sweeping Our Town!

DONALDA LIGHT RIDERS

Professional Drill Team
performing at your events
403-740-5997



We Are Proud and Honoured to Support Tourism in Donalda and District

East Central Alberta Heritage Society

*"Dedicated to the preservation
of railroad heritage"*



**For Information or
To Volunteer 403-742-3997**

www.albertarailheritage.com

Together we can restore rail to Donalda



Ben Van Haga Trucking

Specializing in Hauling

** Grain * Fertilizer * Hay*

Box 1899
Stettler, AB T0C 2L0
Email: benvanhaga@hotmail.com

Cell: 403-323-0060
Fax: 403-742-8215



Bob Halseth
Serving the community
for 36 years

BIG KNIFE CONSTRUCTION

403-883-2205 Cell 403-740-9469
www.bigknifeconstruction.com

New Homes, Renovations, Farm Buildings, Windows, Siding, Shingles, Hardwood and Tiles




Cabin Rentals & Weekend Getaways
Phone 403-740-6699

Custom Cut & Fabricating and NRW (No Regrets Welding)

- Mobile Welding
- Farm Repairs
- CWB Certified
- Custom Design & Fabrication
- Shape Cutting
- Structural Welding

Chad: 403-323-0440 Lane: 403-883-2362

BOOKERSVILLE

Donalda
General Store/Cafe

OPEN MON. TO SAT. 10 AM TO 8 PM
SUN./HOL. 11 TO 6 PM **CLOSED TUESDAYS**

587-998-5195

new location at 5003 Main St (old Nutcracker)



*Laying Ties to Red Willow
Fall 2010*



*1909 Restored CN
Rail Station*

*Alberta
Prairie
Steam Train
going through
Meeting Creek
Valley*



Help Us Bring The Train Back To Donalda

Funds are still needed to complete the rail road from Red Willow to Donalda. We have the station, now all we need is the rails. Big Valley has seen growth in business and residents due to the tourist economy that the train brings. The Village of Donalda would benefit greatly as well. Before the unfortunate removal of the rails, Donalda tourism prospered and flourished. The train brought people from near and far. There is no other tourist attraction quite like it. The train experience is known internationally. Let's share the dream, for more information please contact 403-742-3997 or visit www.albertarailheritage.com.

If We Build It, They Will Come...

COULEE TRADING COMPANY

404 Railway Ave., Donalda, AB T0B 1H0
403-883-2760 After hours - 403-883-2975 or 403-740-2693

djknudts@telusplanet.net

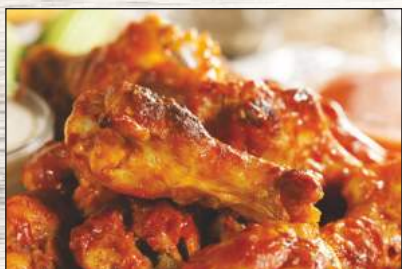


Home Decor ~ Antiques ~
Collectibles ~ Custom Made
Furniture from Reclaimed Wood

NEW HOURS:
Thursday to Monday
10 a.m. to 5 p.m.

DONALDA TAVERN & INN

403-883-2043



20

Join us

**Wednesday &
Saturday nights
for Wing Night**

5 p.m. to 10 p.m.

and

**Friday night
for Steak Night**

6:30 p.m. to 9 p.m.

Please make reservations for these nights

"Enjoy a stay in our newly renovated rooms"



FARM



FRESH

For farm fresh, locally produced

Vegetables contact Luke at 403-740-3547

Chickens contact Mike at 403-916-4352

Eggs contact Rubin at 403-741-4125



Echoglen

GARDENS

Plants are Just the Beginning

Solutions for
Everyday Gardening

2 Miles south of Donald
www.echoglengardens.com
403-883-2849

ECHO RIDGE SEEDS

Derwin & Kirby Massey
Box 534, Stettler, Alberta T0C2L0

Tel: 403-883-2503

Derwin - Cell: 403-741-6464

Kirby - Cell: 403-741-5641

Visit our website for all varieties
at www.echoridgeseeds.com

PEAS

Meadow

WHEAT

Viewfield
Brandon

BARLEY

Austenson
Copeland

Seed Treatments Available

SeCan



FP-GENETICS

Hair on the Hill

"Hair care for the entire family at great prices"

Cuts • Perms • Colours
Foils • Waxing



Mary Mueller, Owner-Operator

403.883.2469

cell: 403.740.2843

3 miles East of Donalda on #53

For Your Yarn and Needle Needs!

Red Heart, Coats,
Susan Bates, Aunt Lydia's,
J & P Coats, Anchor, Bernat,
Blanket Yarn, Caron, Lily,
Patons, Phentex

Heather's Yarn Haven

6001 Foster Street
Donalda, AB T0B 1H0

780-781-0075

hmtmerch@syban.net



Vendors include - Tupperware,
painted decorative Handsaws,
Watkins, Nascar Memorabilia,
Lane's Lathe Woodwork,
Black Sheep Designs - 100%
Merin wool clothing, plus
many more.

* Subject to change





Larry's Hot Oil Service

Complete hot oil service & sealed sour tank truck service.

403-740-6408

Box 131

Donalda, AB T0B 1H0

Fax: 403-883-2603

Email: teresa@tldbookkeeping.com

***the Stettler* Independent**

Since 1906

We're MORE Than Just A Newspaper

We have very competitive prices!

Give us the opportunity to quote!

If it can be printed, WE CAN DO IT

Traditional Presses and Full Colour Digital Printer

For all your commercial printing needs call

Phone: 403-742-2395

Fax: 403-742-8050

email:

commercialsales@stettlerindependent.com

Box 310, 4810 - 50 Avenue

Stettler, AB

T0C 2L0

**Donalda Tourism &
Business Directory**

**Printed for Donalda Promotions
by The Stettler Independent**

jvl John's Vending Ltd.

Specializing in

★ Pool Tables

★ Amusement Games ★ Internet Juke Boxes

Danny Bernard

Box 59

Donalda, AB T0B 1H0

www.johnsvending.ca

24 Hours: **403.883.2444**

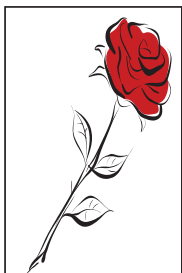
Bus: 403.883.2287

jvldonalda@gmail.com

ROSE CITY MEMORIALS

Wade Montgomery

Memorial Counsellor since 1992



*A memorial is a lasting symbol of
how important loved ones are.
It would be a privilege to serve you.*

Cell 403-742-9571

*Rose City Memorials serving Alberta
& Saskatchewan since 1961*

SHARON

Evangelical Lutheran Church



DONALDA, AB

SUNDAY SERVICE & SUNDAY SCHOOL 10AM

**A WORSHIPPING, LEARNING,
WITNESSING AND SERVING
COMMUNITY**

3117 OLSON STREET, DONALDA
403.883.2025 SHARONDONALDA.COM

**LIVING HOPE
FAMILY BIBLE
CAMP
AUGUST 3RD
TO 8TH AT
DEER VALLEY
MEADOWS,
ALIX, AB.
FOR INFO
CONTACT WADE
MONTGOMERY
403-883-2566**



TODDS WELDING

ltodd@telusplanet.net
RR4 Donalda, AB T0B 1H0

Tel: 403-883-2570
Fax: 403-883-2576

Xplornet data *is unlimited.*

Don't tell the kids they
could be online instead.

1-844-593-4073



XPLORNET
Connect to what matters

xplornet.com



TERESA'S

*Frozen Homestyle Meals
Catering
Fundraisers*

Visit us online: **TERESAS.CA**

5019 Main Street, Donalda, AB

403-883-2780

4915 51 Street, Stettler, AB

403-743-1234

Vikse Family Farm



The Vikse Family Farm has been a proud part of the Donalda Community since 1902.

Annual Bull Sale is on the farm on Family Day in February.

Semen Sales,
Embryos
Females For Sale
Visitors Always Welcome!

403-883-2461 Home 780-608-4460 Cell
www.viksefamilyfarm.com



Herdsires walking the pasture at Vikse Family Farm



GRAND CHAMPION SENIOR BULL
Canadian Bull Congress - January 2019



GRAND CHAMPION PEN OF 3 BULLS
Canadian Bull Congress - January 2019



RESERVE CHAMPION JR. HEIFER CALF
Canadian Red Round-up 2018



Saturday, August 8, 2020

10 a.m. to 2 p.m.

***Sponsored by Donalda & Community
Promotions Society***

**At the World Famous Lamp
Donalda, Alberta**

Everyone welcome

**Cars, Trucks, Antiques,
Motorcycles and more!
Food Truck**

**For more info contact Heather
780-781-0075 cell
hmtmerch@syban.net**

A festive banner for a Canada Day celebration. The banner is gold with red and white stripes and features two red maple leaves. The background is cream-colored with a pattern of white maple leaves and dots. The text is in various colors and fonts, including red, black, and white.

DONALDA

Canada Day Celebration

Wednesday, July 1

11 a.m. to midnight

- Pancake brunch,
kid's entertainment,
roast beef supper,
fireworks and more
- Parade - 4 p.m.
- On the stage by the lamp,
local live entertainment
from 2 to 4 p.m.
- Entertaining live auction
at 7 p.m.
- Live band performs 8:30 to 11:30 p.m.

**Phone 403-883-2493
for more info**