



DONALDA

Business

&

Tourism

Guide

2021/22

Photo competition winner – Ardith Erickson

Compliments of the Advertisers within



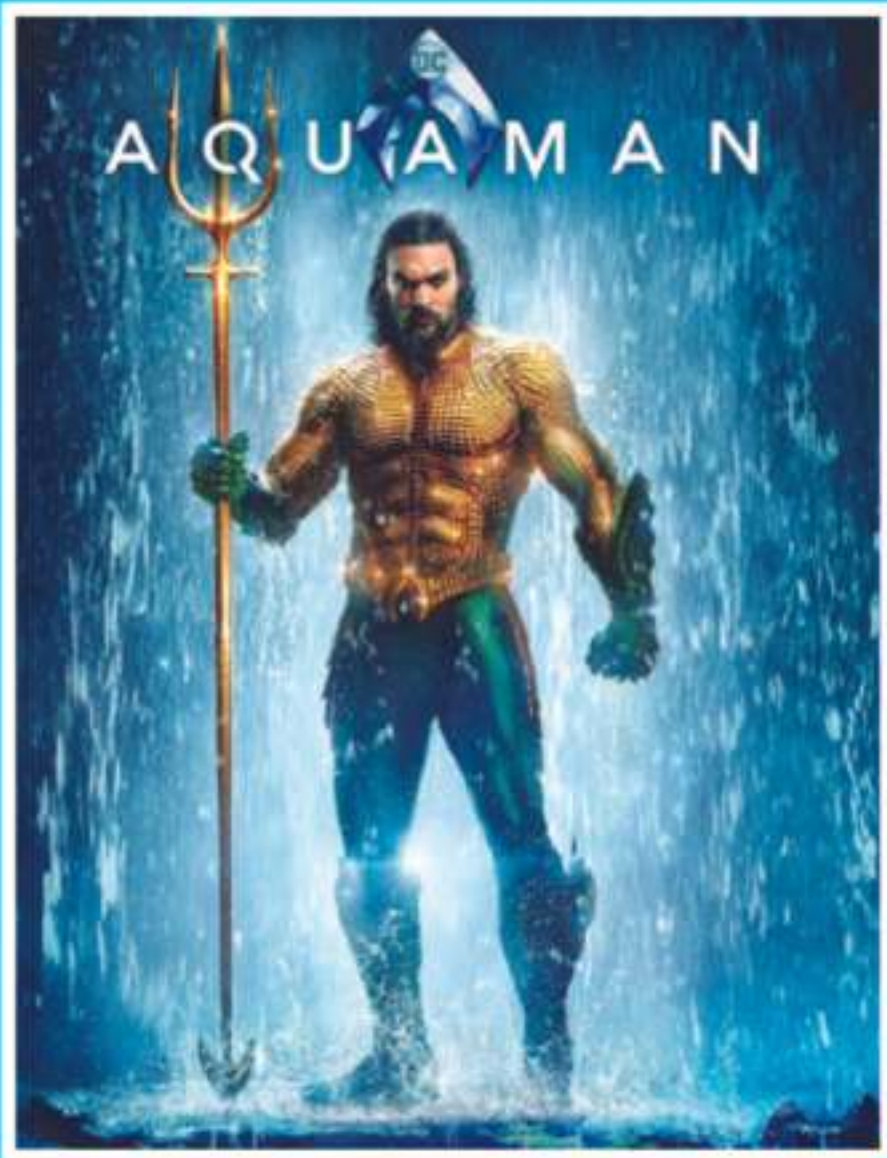
Willow Canyon Drive-In Movie

Movies are dependent on Government or AHS regulations.



Date:
Friday, May 28, 2021

Movie: dusk
(approximately 9:30 p.m.)



Date:
Friday, August 27, 2021

Movie: dusk
(approximately 9:30 p.m.)

Location: Willow Canyon (formerly Donaldda ski hill)

Cost: \$10.00 per person or \$25.00 for a carload

Contact: 403-883-2943

Gates and concession open at 7 p.m.

Come and explore the badlands before the movie.

FEATURING A
20' x 40'
OUTDOOR MOVIE
SCREEN LOCATED
IN THE SCENIC
DONALDA COULEE
BADLANDS

FULL CONCESSION

*Buttered Popcorn, Hot Dogs
Candy & Drinks*

Welcome Everyone To *The Village of Donalda*

Donalda is located in the heart of East Central Alberta overlooking the picturesque Meeting Creek Coulee and the Donalda Badlands. This Coulee is considered to have been a major travel route for early aboriginal civilizations and many stone artifacts have been found in the area. In recent years, a hiking trail has been developed from the Village onto publicly owned lands that covers the top rim to the bottom of the Coulee and the Badlands. These lands exist in their original state and offer the hiker an experience of natural flora and fauna, as well as fantastic sight-seeing. There are picnic tables located along the rim of the coulee, all with wonderful views.

Donalda is proud of its history and has invested in preserving this history. A world famous museum offers a large collection of native artifacts from earlier generations, dinosaur bones, a display of over 5000 local artifacts from the homestead era, and a huge collection, exceeding 1100 in number, of oil burning lamps some as old as the 1600's. The flagship of this collection is the World's Largest replica lamp, standing 42 feet tall, overlooking the Coulee and Badlands and is lit every night. Many historic buildings still exist in Donalda and these add to the overall tourist attractions of the Village.

Donalda is a very vibrant community with events occurring throughout the year, all being managed by a large group of local volunteers and enjoyed by community members and visitors alike. Community members also enjoy access to a modern school which offers Pre School and Kindergarten to Grade 9.

We welcome new residents and offer affordable real estate in a fully serviced village, as well as a quiet and safe lifestyle in a community where you can become involved and make a difference. The Village also encourages new business ventures for those who have creative and entrepreneurial skills and offers a 5 year tax incentive plan for new business and residential structures.

Whether you are a visitor or a new resident of our community, we hope you will enjoy your stay.

*Bruce Gartside, Mayor
Village of Donalda*



The Village of Donalda is located 25 miles northeast of Stettler, 18 miles east of Bashaw and 45 miles southeast of Camrose. Its location on the coulee rim gives the visitor wonderful views and proximity to a whole range of activities for every season of the year. Donalda is 15 minutes from Buffalo Lake with its many beaches and campgrounds including Boss Hill and Pelican Point.

BUSINESS DIRECTORY

Business	Phone #	Contact
* Alberta Prairie Steam Tours	403-742-2811	Bob Willis
* Ben Van Haga Trucking	403-323-0060	Ben Van Haga
* Big Knife Construction	403-740-9469	Bob Halseth
* Big Knife Outfitters	403-740-6699	Cody Cassidy
* BookersVille General Store/Cafe	1-587-998-5195	Pam & Doug Booker
Century 21 - Candor Realty Ltd.	403-742-4424	Fran Snowden
Cold Creek Carpentry	403-741-4581	Troy Auton
* Coulee Tea House	403-883-2755	Amanda or Chantelle
* Coulee Trading Company	403-883-2760	Dan Knudtson
* County of Stettler	403-742-4441	
* Creations by Granny T	403-740-6088	Teresa Donald
* Custom Cut & Fabricating	403-883-2362	Lane Damberger
Divine Wisdom	403-588-2843	Cori Fuller
* Donalda Hutterite Colony	780-878-4490	Kenneth Hofer
Donalda Post Office	403-883-2121	Jody Dalueg
* Donalda Tavern & Inn	403-883-2044	Dean Norman
* East Central Alberta Heritage	403-742-3997	Bob Willis
* Echo Ridge Seeds	403-883-2503	Derwin & Kirby Massey
* Echoglen Gardens	403-883-2849	Roy & Beth Fulton
* Hair on the Hill plus Waxing	403-883-2469	Mary Mueller
Hammer Down Construction	403-740-6467	Travis Halseth
Hang em High Exteriors	403-740-2472	Nolan Shepherd
Healing Hands/Voxx Socks/ Massage Therapy	403-883-0005	Norma Rehman
* Heathers Yarn Haven	780-781-0075	Heather Taylor
<i>* See our display ad in guide</i>		

BUSINESS DIRECTORY

Business	Phone #	Contact
Interior Colours	403-740-5997	Becky Clement
* John's Vending Ltd.	403-883-2287	Danny Bernard
Klatty's Welding Inc.	403-740-5762	Tracey Klatt
* Larry's Hot Oil Service	403-740-6408	Larry Donald
Marila Environmental Inc.	403-883-2922	Marty Larson
* NRW (No Regrets Welding)	403-323-0440	Chad Ramstad
Rick Shepherd Construction	403-741-8433	Rick Shepherd
* Rose City Memorials	403-742-9571	Wade Montgomery
Russell's Hauling Ltd.	403-740-5518	Russell Speed
* Rusty Barbed Farms	780-938-2320	Meegan Carlson
* Stettler Independent	403-742-2395	
* Stenlunds Trucking	403-323-9744	Rick Stenlund
TLD Bookkeeping	403-740-6088	Teresa Donald
* Teresa's Foods	403-883-2780	Teresa Kneeland
	403-743-1234 (Stettler)	
The Re-Coverly Room	403-883-2274	Jim & Trudy Bailey
* Todds Welding	403-883-2570	Lorne Todd
Tornado Combustion		
Technologies	403-883-2400	Charles Lacroix
Tundra Environmental &		
Geotechnical Drilling Ltd.	403-742-6601	Ray & Miriam Weibel
* Vikse Family Farm	403-883-2461	Dave & Tracee Vikse
* Village of Donalda	403-883-2345	
Wrangler Welding	403-588-2847	Curtis Fuller
* See our display ad in guide		

COMMUNITY ORGANIZATIONS

Organization	Phone #	Contact
ABRA (Alberta Barrel Racing Assoc.)	403-883-2721	Becky Dixon
Battle River Rural Crime Watch Assoc.	403-742-7613	Paul McKay
* Donalda & District Ag Society	403-883-2212	Ron Borchuk
<i>For information on renting any of the following facilities please call 403-883-2222 or Beth at 403-741-8196</i>		
Donalda Equestrian Centre	Donalda Community Hall	
Donalda Campground	Willow Canyon & Chalet	
* Donalda & District Community Promotion Society	403-883-2943	Bruce Gartside
* Donalda & District Musuem	403-883-2100	Zoe DeCnodder
Donalda Animal Rescue	403-883-2011	Marie Taggart
* Donalda Cemetery Club	403-883-2377	Holly Komishke
* Donalda Community Arts Society	403-883-2100	Zoe DeCnodder
* Donalda Coulee Friendship Club	403-883-2244	Building
<i>Rentals</i>	403-883-2381	Marlene Conibear
	403-741-6882	Judy Dinsmore
* Donalda Curling Club	403-883-2511	Building
	403-883-2469	Mike Mueller
Donalda Floor Curling	403-883-2993	Kenn Overacker
* Donalda Library	403-430-2665 txt or call	Naomi LaBelle
Friends of the Library	403-883-2943	Bruce Gartside
* Donalda Light Riders	403-740-5997	Becky Clement
Donalda Minor Baseball	403-430-0883	Julie Siemens
* Donalda School	403-883-2280	Warren Aspenes
Donalda School Parent Council	403-740-6654	Jen Charles
Donalda Fire Department		
Fire Permits must be obtained from the County of Stettler	403-742-4441	
Feral Cat Network of AB	403-741-7752	Tracy or Candace
	or 780-603-9512	
	feralcatnetworkfoundation@outlook.com	
* Sharon Evangelical Lutheran Church	403-430-0883	Mark Siemens
Spruce Coulee Community Centre	403-883-2469	Mike Mueller
Willow Canyon Hiking Trail	403-883-2943	Bruce Gartside

* *See our display ad in guide*

EMERGENCY NUMBERS

Apex Utilities	1-866-222-2067
ATCO Electric	1-800-668-5506
Donalda Village Office	403-883-2345
Fire, Medical, RCMP	911

COMMUNITY EVENTS

April 2021 - April 2022

Events are dependent of Government Restrictions

May 8-9, 2021	Mother's Day Poker Rally	403-740-5997
May 28, 2021	Drive-In Movie " <i>American Graffiti</i> "	403-883-2943
June 5, 2021	Donalda Ranch Rodeo	403-741-8196
July 1, 2021	Canada Day Festivities	403-883-2943
August 2-7, 2021	Living Hope Family Bible Camp	403-883-2566
August 7, 2021	Donalda Coulee Show and Shine	780-781-0075
August 21-22, 2021	Donalda Light Horse Show	403-741-8864
August 27, 2021	Drive-In Movie " <i>Aquaman</i> "	403-883-2943
September 25-26, 2021	Willy Bronze Poker Rally	403-740-5997
October 23, 2021	Donalda Ag. Fall Supper	403-741-8196
December 5, 2021	A Village Christmas Santa Parade • Christmas Market • Santa's Shopping Centre	403-883-2943
January 31 - February 6, 2022	Donalda Curling Bonspiel	403-883-2469
February 21, 2022	Family Day Winterfest	403-883-2943
March 1, 2022	Shrove Tuesday Pancake Supper	403-883-2555
TBD	FCSS Volunteer Supper	

DONALDA RECYCLING TRAILER

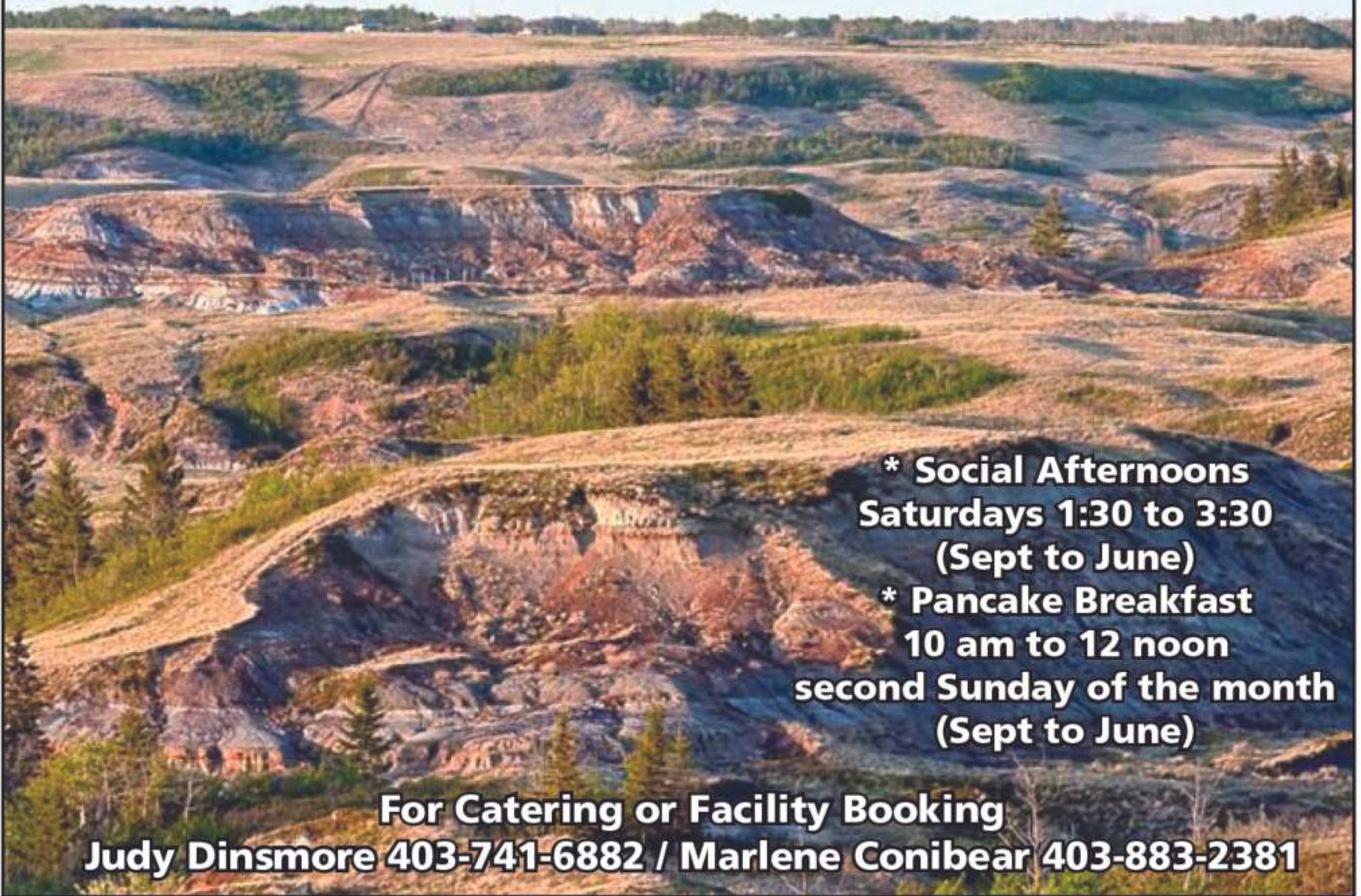


The proceeds from the recycle trailer help to fund many community societies.

The Community of Donalda hosts many events and is still thriving thanks to the hard work of our volunteers.

DONALDA COULEE FRIENDSHIP CLUB

Main Street



* Social Afternoons
Saturdays 1:30 to 3:30
(Sept to June)

* Pancake Breakfast
10 am to 12 noon
second Sunday of the month
(Sept to June)

For Catering or Facility Booking
Judy Dinsmore 403-741-6882 / Marlene Conibear 403-883-2381

Donalda Public Library

“Committed to the Community”

Offering:

**Books, Local History Books, Movies
Printing Services, Programs,
Free Wi-Fi & Computer Services**

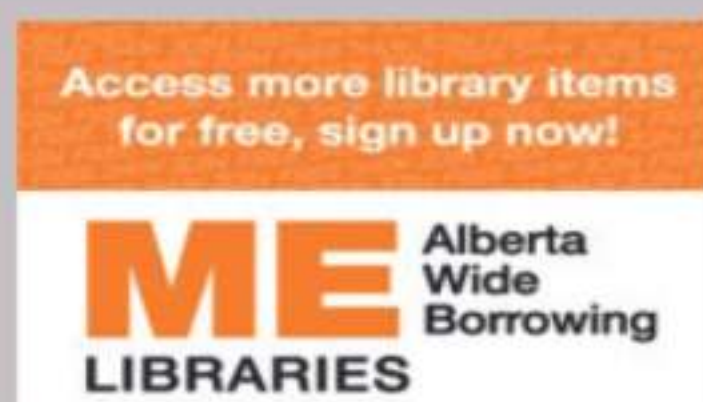
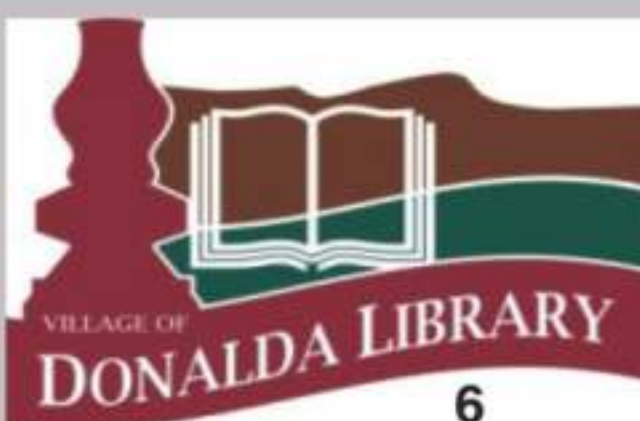


Visit us today!



Located in the Village Complex, 5001 Main Street
www.donaldalibrary.prl.ab.ca

403-430-2665 txt or call
e-mail: donaldalibrary@prl.ab.ca



Donalda Gallery for the Arts



At the crossroads of creation and the appreciation of art, is the Donalda Gallery for the Arts. It is located in the historic 1928 Imperial Bank of Canada Building with a commanding view of the Meeting Creek Valley. Today, the high ceilings of the bank hall provide a wonderful gallery space for the changing exhibits of art by professional, emerging and beginning artists from Donalda and surrounding area.

The Gallery for the Arts is managed by the Donalda Community Arts Society. They are dedicated to the exploration, creation and preservation of art in any form from canvas to fabric, metal to wood and all mediums in between.

This year's art exhibits have not been scheduled due to Covid.

www.donaldamuseum.com

Please check facebook at Donalda Gallery for the Arts



Continuing Education

The Donalda Community Arts Society is continually looking into hosting art lessons in all mediums. If you are interested in learning or teaching a discipline, please contact us.



**403-883-2100
Box 72
Donalda, AB
T0B 1H0**





Donaldda *and* District

Volunteers Cultivating Community

Events

- Mother's Day Memorial Poker Rally
- Willy Bronze Poker Rally
- Ranch Rodeo
- Light Horse Show
- Harvest Supper
- Country Christmas Market

Follow us on Facebook

Contact Us At:

Box 248

Donaldda AB T0B 1H0

email: donaldaagsociety@gmail.com

For Facilities & Info:

Call 403-741-8196

Agricultural Society

www.donaldaagsociety.com

& Sustaining Agricultural Relations

Equestrian Centre

Heated Riding Arena, Kitchen, Outdoor arena & Pens

Available for clinics, group & individual rental
Affordable year membership or pay by usage

Community Hall

Split level recently renovated upstairs & down

Kitchen facilities & equipment
Stage & light system

Willow Canyon

120 Acres of Coulee Badlands & Hiking Trails

Heated chalet with kitchen
Outdoor lights for night activities

Campground

Power hookups with washroom & shower facilities

Available for group or individual rental
Located next to the Equestrian Centre

Donalda Heritage



Donalda was incorporated in 1912 at the height of the development of many small towns across Alberta as railways were built across the countryside. The first settlers to the Donalda area arrived in the 1890s.

The original Canadian Northern Railway train station was erected in 1911 but was removed and replaced by the 1909 Standard 4th class Canadian Northern Railway Station brought from Vandura, Saskatchewan. The interior

of the station can be viewed by contacting the museum. It exists now exactly as it was when it closed its doors. On the north side of the train station is an original bunkhouse for the rail workers.

The Buildings of Main Street

Main Street, Donalda, is typical of the business district of many boomtowns established during this period of rapid development. “Boomtown architecture,” as it is called, is most commonly associated with the early 1900s but continued to be a popular style until the middle of the 20th century. The style was characterized by a decorative false front covering a humble, gabled building behind it, typical of many buildings in the North American west at the turn of the 20th century. The false front increased the building’s presence on the street and provided a large surface area for signage. The business district of Donalda is one long street with a variety of brick and wood-frame buildings on either side.

The **Village Office/Museum/Library** complex on Main Street was originally the site of a large hotel built in 1912. It had twenty rooms and seating capacity for 100 patrons in the bar. The hotel burned down in March 1971. The **Village Office/Museum/Library** complex was built in 1980 to house the privately donated lamp collection.

On the north side of Main Street is the impressive **Imperial Bank of Canada** dating from 1928. The branch was held up by three armed men in August 1975. During the robbery, staff were locked in the vault. When the bank manager returned from lunch, he released the staff from the vault. The three bank robbers were caught and charged. It is a Alberta Heritage Registered Resource.

The **Antique Market** was built about 1916 as a store and garage.

The building housing the **Train Emporium** dates from 1925. An addition similar in design was added in 1953.

The present hotel (**Donalda Inn and Tavern**) was moved from Meeting Creek (northwest of Donalda) in the early 1970s after the original Donalda Hotel burned down. The two-storey Meeting Creek hotel was built about 1910.

The former **Donalda Youth Centre** was originally the Independent Order of Foresters (IOOF) Hall built in 1939. It also operated as a movie theatre and community hall until a larger new hall was built in 1955 (corner of Main St and Alberta Ave).

The **Community Hall**, the site of many activities from concerts to funerals, to pancake breakfasts, was built in 1954 for \$18,000.

The **Donalda Coulee Friendship Club Drop-In Centre** on the south side of the street was built in 1948 as the town fire hall and Village office until the present museum and village office complex was opened in 1980.

Walking Tour

The fire truck from the 1940s is parked year round at the south end of the lamp park on Railway Ave.

Teresa's Catering is the newest building on the block being built in about 2015.

The **Donalda Locker Plant**, a co-operative freezer facility was built in 1948.

The One Story building with a large false front, known as BookersVille now – was moved from North of Donalda in 1912 to Main Street, Donalda. The original building operated as a grocery store. It has since been The Nut Cracker Suite, Restaurant and Ice Cream Shop.

Other sites around the Village. Around the corner from the Museum on Railway Avenue is the **Coulee Trading Company**, before that the Donalda Garage. By the 1950s it was called Central Garage with a car dealership and BA (British American) service station.

On Foster St. was a hardware store then Dino's Bar and Grill and now is the home for **Heather's Yarn Haven and Vendor's Market**.

The **original school** in Donalda was located on Bond Street on the south side of the village. Fire destroyed it in 1937. This building was replaced by a new school in 1980 (K to 9) on the corner of Haviland St. and Alberta Ave.

There have been a few **churches** in Donalda. The first Lutheran church congregation was established in 1903 before the village was incorporated. The Sharon Lutheran congregation was established in 1906. (corner of Olson St. and Lee Ave.) When the United Church, corner of Olson St. and Alberta Ave., was closed the building was moved and attached to the current Sharon Church.

The original **Donalda Creamery** (Woodland Dairy) was opened on Foster Street, a block north of Main Street, in 1924. In 1937 it became the **Donalda Co-operative Creamery**. "Donalda Maid" butter was shown across Canada at different exhibitions. The creamery operation closed in April, 1987. The creamery building is an Alberta Registered Historic Resource. This building exists now exactly as it did when it closed its doors in 1987. Tours of the Creamery can be arranged through the Museum. This building is one of only two surviving Co-op creameries in all of Alberta.

No description of Donalda is complete without telling the story of the big Lamp. The Village was looking for ideas to promote tourism when the train was still in service from Stettler. In the year 2000, a number of community-minded individuals got together to discuss the building of a lamp replica. They fundraised \$140,000 and built this landmark which is 42 feet (12 metres) tall.

For those visitors interested in nature, the Meeting Creek Coulee, below Donalda, is a fascinating area. It is called Meeting Creek for the fact that the Cree to the north and the Blackfoot from the south frequently met here when on their buffalo hunts. The coulee (another name for valley) is the northern extension of the badlands which are more pronounced south around Drumheller and beyond, revealing unusual rock formations and fossils of dinosaurs. The coulee is a meltwater channel formed when the glaciers of the last Ice Age receded 15,000 years ago. The Village of Donalda overlooks the **Badlands** to the east of the village.

There are many century residential homes located in the Village. More information can be obtained from the Donalda Museum.

The full tour detail can be viewed on the Village of Donalda website.



Donalda & District Museum

The Donalda & District Museum was established in 1979 with a large collection of artifacts given to the Village by local residents Don & Beth Lawson. Today, it remains our mission to maintain, preserve and exhibit artifacts to future generations for their education and enjoyment.



Our world-famous museum houses over 1,000 lamps, making it one of the largest lamp collections in the country. Most lamps are coal-oil burning from the late 1800s and early 1900s. Some lamps are hundreds of years old, few dating back to the 1500s. Many portray the daily lives of the early settlers in Alberta.



Other artifacts range from building tools to kitchen wares, household and personal items, and community memorabilia. Some artifacts are unique & rare, like a mouse-proof cabinet patented in 1881, home made mousetrap, shaving equipment, hair curling irons, a set of Norwegian wedding spoons, coins and tokens.

Western Canada in the mid-19th century was a land of great opportunities but also a land of loneliness, hardships, & danger. Nevertheless, many chose to brave these concerns & settle here.

The Whitford Collection depicts one such pioneer family. Donald Whitford, a Métis, spoke five languages and put them to use as an interpreter, freighter, trader, and surveyor. He came west in 1855 and in 1879 married a native woman, Peggy Paul. Together they had 12 children, many still living in the Donalda Area. The museum houses their personal leather and quill art.



Unlocking the Past...Lighting the Future

The Museum also manages three historical buildings in the Village: The Donalda Co-operative Creamery, the Imperial Bank of Canada, & the Canadian Railway Station.



The Bank, originally the Bank of Montreal, was built in 1928 and became the Imperial Bank of Canada in 1932. It was open until 1997, and has since been converted into the Donalda Gallery of the Arts, holding art shows, and displays.

The Railway station a CN 4th Class building was relocated from Vandura, SK to Donalda in 1992. The original Donalda station was built in 1911, but was torn down.

The Creamery began in 1924 but was replaced by the present building in 1954 until it closed in 1987. The equipment was left just as it was on its last day of operation. The Creamery was noted for its "Donalda Maid Butter" which won many awards across Canada. The creamery is



a provincial heritage Resource.



When Donalda began the new millennium the World's Largest replica of a Coal-Oil Burning Lamp was erected, complementing the museum and its lamp collection. The lamp was a model of community

volunteerism. When it was completed on July 1st, 2000, a new era with a tourism-based economy began.

Today, we are proud of our accomplishments & the efforts to develop events & attractions in our community. The Museum reflects the whole history of the community & the district, from the prehistoric past to the present.

Contact Information:

Box 179, Donalda, AB T0B 1H0
email: info@donaldamuseum.com
Phone: 403-883-2100
www.donaldamuseum.com

Village of DONALDA

P.O. Box 160
5001 Main Street
Donalda, AB
T0B 0H0

403-883-2345

www.village.donalda.ab.ca



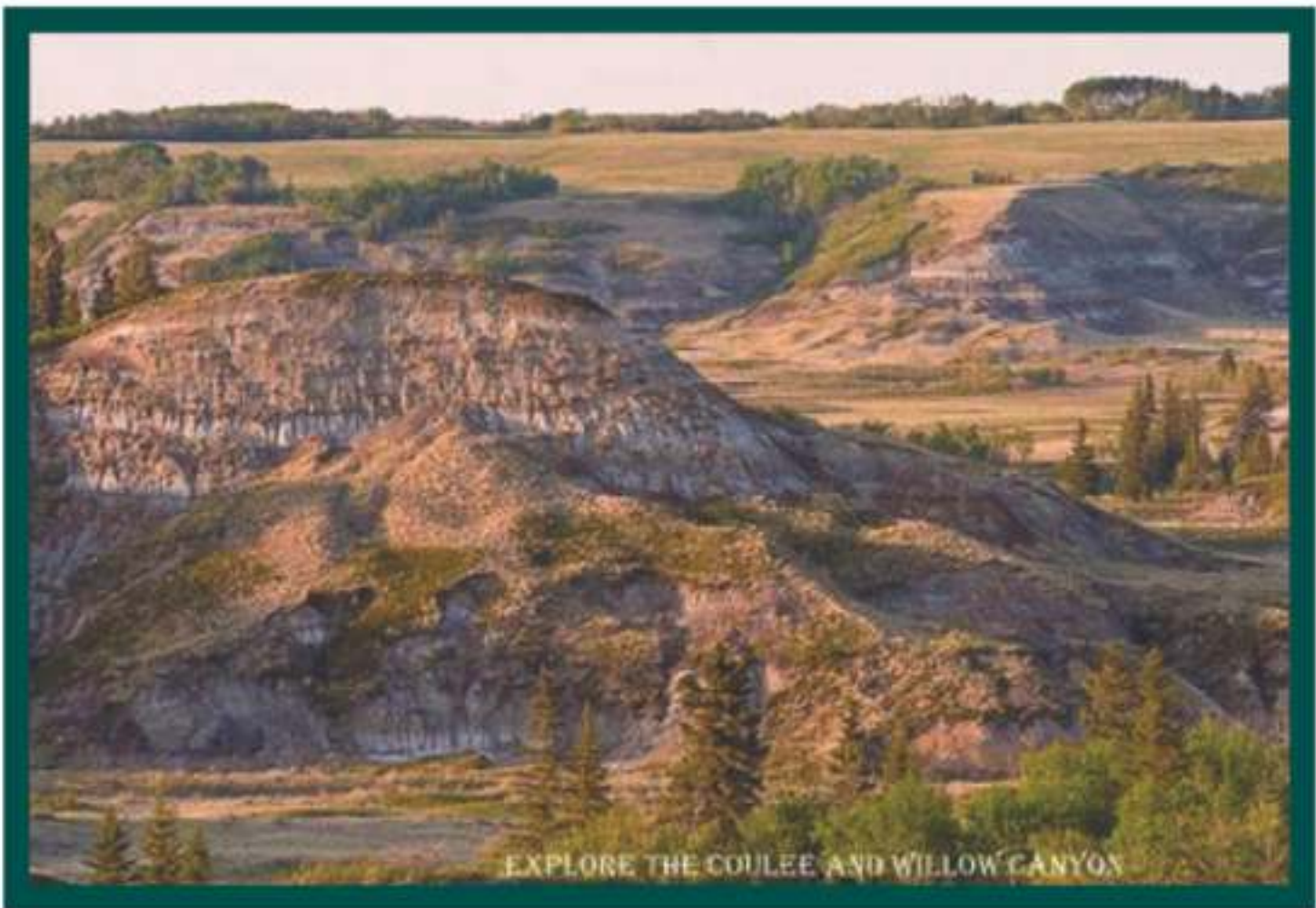
The Village of Donalda is located on the northern most point of the Canadian Badlands, overlooking the Meeting Creek Coulee, giving Donalda a view of one of Alberta's most iconic landscapes. Opportunities abound for artists, photographers, hikers, and naturalists. Explore nature on the hiking trail that takes you

along the coulee rim and down into Willow Canyon. This beautiful location also provides the perfect backdrop for Donalda's tourism gem, the world's largest oil lamp replica, that illuminates the night sky, and the renowned museum it represents.

The original settlement was called Eidswold by the Norwegian settlers who first founded the community as early as 1909. On December 31, 1912, the village adopted the name Donalda after Donalda Crossway, the niece of Sir Donald A. Mann, a Canadian National Railway master builder and visionary. Donalda is built on history and recognizes its importance. Come visit one or all our historic buildings including the historically designated creamery, the 1932 Imperial Bank building, and the restored 1909 CN Railway Station.



Donalda is driven by a vibrant group of volunteer organizations, led by incredible community members who take pride in the historical and agricultural significance of this community. These extraordinary groups create programming for all ages, ignite community spirit, and make Donalda a place that feels warm and inviting to anyone who comes here. No matter your age or interests, you are guaranteed to find something for you!



The vivacity of Donalda is also reflected in the over fifty active businesses that are located in the village and surrounding area. These businesses offer antiques, art, hotel, cafés, catering, hair services, gardening, upholstery, transportation, and more. There are so many unique and remarkable treasures that can be found by exploring our local businesses.



In such a small, close-knit community, neighbours look out for each other and families can find a safe place to raise their children. The school has come a long way from the one-room school-

house in the 1910s to the K-Gr.9 institute that currently resides. The school and its educators work tirelessly, along with the community, to provide all its students quality education in a caring environment. The community of Donalda is committed to providing a safe, nurturing, friendly, affordable, and attractive community for this generation and future generations to come. Visit Donalda. You'll love it here!

The Village of Donalda has
SERVICED LOTS FOR SALE

Located just off Bond Street, these are close to the school and priced to sell. Contact the Village for more information.

Donalda School

Quality Education in a Caring Environment



Academics

Literacy and numeracy are the academic program. Students h supports in whole and small gr currently planning for the deliv enhancement program to sup levels.



Start Right Playschool

Our Start Right Playschool program is a literacy enriched play structured program for three and four year olds. In this fun environment, students embrace their natural curiosity, while building relationships with others.



Athletics

Athletics are a special part of s School. Despite being small, ou both CARA and CWAJHAA. D volleyball, cross country runni badminton, and track and field



Nutrition and Wellness

As part of our focus on nutrition, once a week our junior high students work with a professional caterer to prepare nutritious and delicious meals he entire school.



the two focal points of our
have daily access to literacy
group instruction. The staff is
delivery of a numeracy
support students at all skill



Fine Arts

Our school boasts a robust art, drama, and music programs. The K-9 Christmas musical has quickly emerged as a popular community celebration.



f student life at Donalda
our teams are competitive in
Donalda School teams include:
ning, basketball, curling,
ld.



Building Community

Thrilling Thursdays is one of the way we build community throughout the school. All students participate in multigraded tribes to complete fun activities while learning about cooperation, sharing, leadership, and community spirit.



DONALDA & DISTRICT COMMUNITY PROMOTION SOCIETY

Mission

To promote and market Donalda and area to others and ourselves by:

Hosting community events like Family Day, Canada Day, Show and Shine and the Village Christmas. Providing a welcome package to new residents.

Publishing the Business and Tourism Guide annually;
Responsible for Hiking Trail.

Members

If you would like to make a difference in our community and have some fun doing it, we would love to hear from you. We are always looking for volunteers and new members. Membership is Free!

Please feel free to phone us at 403-883-2943

Donalda Business and Tourism Guide is published by the Donalda Community Promotion Society with the financial support of the Advertisers.



DONALDA CEMETERY

Box 3,
Donalda, AB
T0B 1H0

403-883-2377



Donalda Curling Club

Mixed Curling League
(January to March)

All interested players welcome
from beginners to professionals.

Annual Curling Bonspiel
takes place in February.

For more info. please call
403-883-2469

RENTALS

\$100.00 - Day

Lobby Rentals all year round

Curling is Sweeping Our Town!

DONALDA LIGHT RIDERS

Professional Drill Team
performing at your events
403-740-5997



We Are Proud and Honoured to Support Tourism in Donalda and District

East Central Alberta Heritage Society

*"Dedicated to the preservation
of railroad heritage"*



For Information or
To Volunteer 403-742-3997

www.albertarailheritage.com

Together we can restore rail to Donalda

COULEE TRADING COMPANY

404 Railway Ave., Donalda, AB T0B 1H0
403-883-2760 After hours - 403-883-2975 or 403-740-2693

djknudts@telusplanet.net



Home Decor ~ Antiques ~
Collectibles ~ Custom Made
Furniture from Reclaimed Wood

NEW HOURS:
Thursday to Monday
10 a.m. to 5 p.m.

DONALDA TAVERN & INN

403-883-2044



Join us

**Wednesday &
Saturday nights
for Wing Night**

5 p.m. to 10 p.m.

and

**Friday night
for Steak Night**

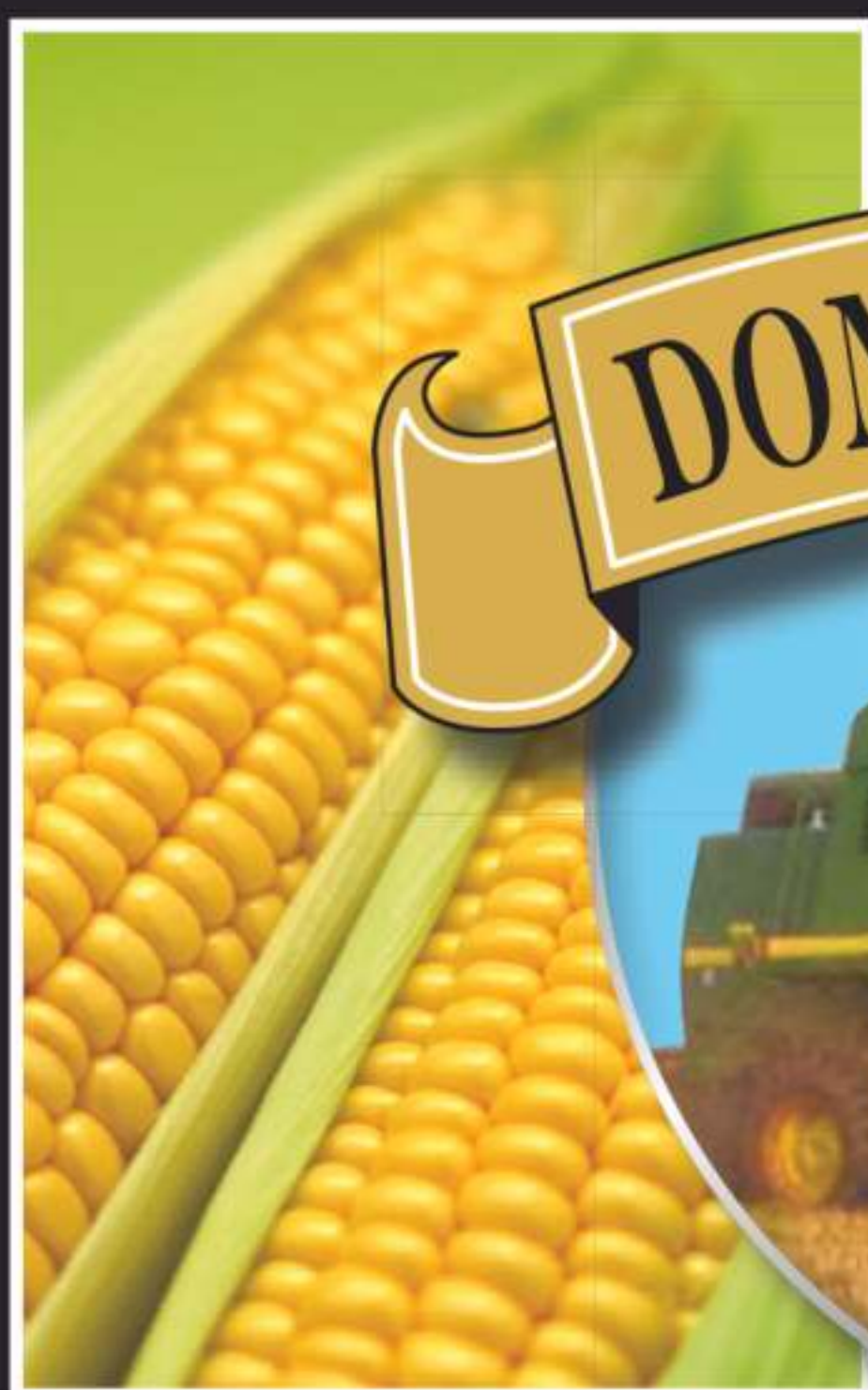
6 p.m. to 9 p.m.

Please make reservations for these nights

"Enjoy a stay in our newly renovated rooms"



FARM



DONALDA COLONY



FRESH

For farm fresh, locally produced

Vegetables contact Luke at 403-740-3547

Chickens contact Mike at 403-916-4352

Eggs contact Rubin at 403-741-4125



Ben Van Haga Trucking

Specializing in Hauling

** Grain * Fertilizer * Hay*

Box 1899

Stettler, AB T0C 2L0

Email: benvanhaga@hotmail.com

Cell: 403-323-0060

Fax: 403-742-8215



BIG KNIFE

Bob Halseth
Serving the community
for over 35 years



CONSTRUCTION

403-883-2205 Cell 403-740-9469

www.bigknifeconstruction.com

New Homes, Renovations, Farm Buildings, Windows, Siding, Shingles, Hardwood and Tiles



Cabin Rentals & Weekend Getaways

Phone 403-740-6699

BOOKERSVILLE

Donalda

General Store/Cafe

OPEN Mon to Sat 11AM to 8PM Sun/Hol. 11AM to 6PM

587-998-5195

Free Delivery within Donalda
4003 Main Street

COULEE Tea House

Thurs.-Mon. 11 a.m. to 4 p.m.

Daily In-Store Fresh Baking
Multiple Varieties of
High Quality Teas!



403-883-2755

404 Railway Ave., Donalda, Alberta



Chunky Hand
Knit Blankets
Merino Wool,
Chenille &
Loop Yarn

403.740.6088

Teresa Donald

Custom Cut & Fabricating and NRW (No Regrets Welding)

- Mobile Welding
- Farm Repairs
- CWB Certified
- Custom Design & Fabrication
- Shape Cutting
- Structural Welding

Chad: 403-323-0440 Lane: 403-883-2362



Proud to play a supporting role.

403.742.4441
info@stettlercounty.ca
www.StettlerCounty.ca



Donalda's Nature Trail

Explore Willow Canyon and the Donalda Coulee

Pack a picnic, bring sunscreen, water and bug spray, and get acquainted with this unique, natural playground.

The trail is also open during the winter for cross-country skiing enthusiasts.

Map Available at Local Businesses or village.donalda.ab.ca
For more info phone 403-883-2943.

ECHO RIDGE SEEDS

Derwin & Kirby Massey

Box 534, Stettler, Alberta T0C 2L0

Tel: 403-883-2503

Derwin - Cell: 403-741-6464

Kirby - Cell: 403-741-5641

**Visit our website for all varieties
at www.echoridgeseeds.com**

PEAS

Meadow
Carver

WHEAT

AAC
Viewfield
Brandon
AAC
Wheatland

BARLEY

Austenson
Copeland
ACC Connect
Esma

Seed Treatments Available

SeCan



FP-GENETICS

Hair on the Hill

"Hair care for the entire family at great prices"

Cuts • Perms • Colours
Foils • Waxing



Mary Mueller, Owner-Operator

403.883.2469

cell: 403.740.2843

3 miles East of Donalda on #53

Hayes Contracting

403-916-4246

**Home Renovation and
Improvement Specialist**

Offering 30+ Years' Experience

Your One-Stop-Shop!

Big or Small - One Call

Priced Right and Done Right!

**For creative and budget wise home
maintenance and repair solution call your
local contractor, Chas Hayes**



Echoglen

GARDENS



Plants are Just the Beginning

*Solutions for
Everyday Gardening*

*2 Miles south of Donalds
www.echoglengardens.com
403-883-2849*

Heather's Yarn Haven

6001 Foster Street Donalda, AB 780-781-0075



Yarn, Watkins, Tupperware, Woodworking, Osborne books, weaving, Cornucopia Popcorn and Macrame cord and much, much more!

**Visit - Heather's Yarn TODAY @
6001 Foster Street, Donalda
Call - 780-781-0075**



John's Vending Ltd.

Specializing in

★ Pool Tables

★ Amusement Games ★ Internet Juke Boxes

Danny Bernard

Box 59
Donalda, AB T0B 1H0
www.johnsvending.ca

24 Hours: 403.883.2444
Bus: 403.883.2287
jvldonalda@gmail.com

ROSE CITY MEMORIALS

Wade Montgomery

Memorial Counsellor since 1992



*A memorial is a lasting symbol of
how important loved ones are.
It would be a privilege to serve you.*

Phone 403-742-9571

*Rose City Memorials serving Alberta
& Saskatchewan since 1961*



Larry's Hot Oil Service

Complete hot oil service & sealed sour tank truck service.

403-740-6408

**Box 131
Donalda, AB T0B 1H0**

**Fax: 403-883-2603
Email: teresa@tldbookkeeping.com**

the Stettler Independent

Since 1906

We're MORE Than Just A Newspaper

*We have very competitive prices!
Give us the opportunity to quote!*

If it can be printed, WE CAN DO IT
Traditional Presses and Full Colour Digital Printer

For all your commercial printing needs call

Phone: 403-742-2395

Fax: 403-742-8050

email:

commercialsales@stettlerindependent.com

**Box 310, 4812A - 50 Avenue
Stettler, AB
T0C 2L0**

**Donalda Tourism &
Business Directory**

**Printed for Donalda Promotions
by The Stettler Independent**



RUSTY BARBED FARMS

MICROGREENS

Gourmet Garlic / Fresh Herbs

Meeting Creek, AB

Text: 780-938-2320



SHARON

Evangelical Lutheran Church



DONALDA, AB

SUNDAY SERVICE & SUNDAY SCHOOL 10AM

**A WORSHIPPING, LEARNING,
WITNESSING AND SERVING
COMMUNITY**

3117 OLSON STREET, DONALDA
403.883.2025 SHARONDONALDA.COM

**LIVING HOPE
FAMILY BIBLE
CAMP**

**AUGUST 3RD
TO 8TH AT
DEER VALLEY
MEADOWS,
ALIX, AB.**

**FOR INFO
CONTACT
MARK SIEMENS
403-430-0883**

TODDS

WELDING

ltodd@telusplanet.net
RR4 Donalda, AB T0B 1H0

Tel: 403-883-2570
Fax: 403-883-2576



403-323-9744
bale dude@hotmail.com



BALE HAULING • GRAIN HAULING • DECK WORK

WWW.STENLUNDSTRUCKING.COM

Xplornet Internet:
Now 2x FASTER!

1-844-593-4073



XPLORNET

xplornet.com



TERESA'S

Frozen Homestyle Meals
Catering
Fundraisers

Visit us online: **TERESAS.CA**

5019 Main Street, Donalda, AB

403-883-2780

4915 51 Street, Stettler, AB

403-743-1234

Vikse Family Farm



The Vikse Family Farm has been a proud part of the Donalda Community since 1902.

Bulls Sell By Private Treaty

Semen Sales,
Embryos
Females For Sale
Visitors Always Welcome!

403-883-2461 Home 780-608-4460 Cell

www.viksefamilyfarm.com



Herdsires walking the pasture at Vikse Family Farm



GRAND CHAMPION SENIOR BULL
Canadian Bull Congress - January 2019



GRAND CHAMPION PEN OF 3 BULLS
Canadian Bull Congress - January 2019



RESERVE CHAMPION JR. HEIFER CALF
Canadian Red Round-up 2018



Sponsored by Donalda & Community Promotions Society

Saturday, August 7, 2021 - 10 a.m. to 2 p.m.

At the World Famous Lamp - Donalda, Alberta

Everyone welcome

**Cars, Trucks, Antiques, Motorcycles and more!
Food Truck**

**For more info contact Heather 780-781-0075 cell
hmtmerch@syban.net**

Help Us Bring The Train Back To Donalda



*Laying Ties to Red Willow
Fall 2010*



1909 Restored CN Rail Station

*Alberta Prairie Steam Train
going through
Meeting Creek Valley*



Funds are still needed to complete the rail road from Red Willow to Donalda. We have the station, now all we need is the rails. Big Valley has seen growth in business and residents due to the tourist economy that the train brings. The Village of Donalda would benefit greatly as well. Before the unfortunate removal of the rails, Donalda tourism prospered and flourished. The train brought people from near and far. There is no other tourist attraction quite like it. The train experience is known internationally. Let's share the dream, for more information please contact 403-742-3997 or visit www.albertarailheritage.com.

If We Build It, They Will Come...