

# DONALDA

## *Business & Tourism Guide 2025*



# Willow Canyon Drive-In Movie

## Angels in the Outfield

Saturday, May 10, 2025

Movie starts at dusk

## FEATURING...



## Footloose

Saturday, September 20, 2025

Movie starts at dusk



**Location:** Willow Canyon  
(formerly Donalda Ski Hill)

**Cost:** \$10.00/person or \$25.00  
per car load (cash only)

**Full Concession:** Buttered  
Popcorn, Drinks & Candy

Gates & Concession opens at **7:00pm**.

Come early for family outdoor games.

*Explore DONALDA before the movie*

Contact: 780-781-0075 Email: donaldapromosociety@gmail.com

# Willow Canyon Drive-In Movie

## Angels in the Outfield

Saturday, May 10, 2025

Movie starts at dusk

## FEATURING...



## Footloose

Saturday, September 20, 2025

Movie starts at dusk



**Location:** Willow Canyon  
(formerly Donalda Ski Hill)

**Cost:** \$10.00/person or \$25.00  
per car load (cash only)

**Full Concession:** Buttered  
Popcorn, Drinks & Candy

Gates & Concession opens at **7:00pm**.

Come early for family outdoor games.

*Explore DONALDA before the movie*

Contact: 780-781-0075 Email: donaldapromosociety@gmail.com



# Willow Canyon Drive-In Movie

## Angels in the Outfield

Saturday, May 10, 2025

Movie starts at dusk

## FEATURING...



## Footloose

Saturday, September 20, 2025

Movie starts at dusk



**Location:** Willow Canyon  
(formerly Donalds Ski Hill)

**Cost:** \$10.00/person or \$25.00  
per car load (cash only)

**Full Concession:** Buttered  
Popcorn, Drinks & Candy

Gates & Concession opens at **7:00pm**.

Come early for family outdoor games.

*Explore DONALDA before the movie*

Contact: 780-781-0075 Email: donaldapromosociety@gmail.com

# *Welcome Everyone To*

# *The Village of Donalda*

Donalda is located in the heart of East Central Alberta overlooking the picturesque Meeting Creek Coulee and the Donalda Badlands. This Coulee is considered to have been a major travel route for early aboriginal civilizations and many stone artifacts have been found in the area. In recent years, a hiking trail has been developed from the Village onto publicly owned lands that covers the top rim to the bottom of the Coulee and the Badlands. These lands exist in their original state and offer the hiker an experience of natural flora and fauna, as well as fantastic sight-seeing. There are picnic tables located along the rim of the coulee, all with wonderful views.

Donalda is proud of its history and has invested in preserving this history. A world famous museum offers a large collection of native artifacts from earlier generations, dinosaur bones, a display of over 5000 local artifacts from the homestead era, and a huge collection, exceeding 1100 in number, of oil burning lamps some as old as the 1500's. The flagship of this collection is the World's Largest replica lamp, standing 42 feet tall, overlooking the Coulee and Badlands and is lit every night. Many historic buildings still exist in Donalda and these add to the overall tourist attractions of the Village.

Donalda is a very vibrant community with events occurring throughout the year, all being managed by a large group of local volunteers and enjoyed by community members and visitors alike. Community members also enjoy access to a modern school which offers Pre School and Kindergarten to Grade 9.

We welcome new residents and offer affordable real estate in a fully serviced village, as well as a quiet and safe lifestyle in a community where you can become involved and make a difference.

The Village also encourages new business ventures for those who have creative and entrepreneurial skills and offers a year tax incentive plan for new business and residential structures.

Whether you are a visitor or a new resident of our community, we hope you will enjoy your stay.



The Village of Donalda is located 25 miles northeast of Stettler, 18 miles east of Bashaw and 45 miles southeast of Camrose. Its location on the coulee rim gives the visitor wonderful views and proximity to a whole range of activities for every season of the year. Donalda is 15 minutes from Buffalo Lake with its many beaches and campgrounds including Boss Hill and Pelican Point.

# BUSINESS DIRECTORY

| Business                             | Phone #                      | Contact               | Ad Page # |
|--------------------------------------|------------------------------|-----------------------|-----------|
| Alberta Prairie Steam Tours          | 403-742-2811                 | Bob Willis            |           |
| Alberta Realty                       | 780-781-7144                 | Ty Wilson             | 17        |
| Athae Message & Wellness             | 780-722-5274                 | Debie Parenteau       | 18        |
| Ben Van Haga Trucking                | 403-323-0060                 | Ben Van Haga          | 18        |
| Big Knife Construction               | 403-740-9469                 | Bob Halseth           | 18        |
| Big Knife Outfitters                 | 403-740-6699                 | Cody Cassidy          | 19        |
| Black Sheep Designs                  | 403-740-5997                 | Becky Halseth         | 19        |
| Broughton Gasfitting & Services Ltd. | 780-608-4333                 | Scott Broughton       | 19        |
| Chris the Carpenter                  | 403-991-1881                 | Chris R               | 22        |
| Coulee Tea House (2023)              | 403-883-2755                 | Karl & Judy Torkelson | 20        |
| Coulee Yarn Designs                  | 780-781-0075                 | Heather Taylor        | 22        |
| County of Stettler                   | 403-742-4441                 |                       | 25        |
| Creations by Granny T                | 403-740-6088                 | Teresa Donald         | 20        |
| Custom Cut & Fabricating             | 403-883-2362                 | Lane Damberger        | 20        |
| Donalda Hutterite Colony             | 780-878-4490                 | Kenneth Hofer         | 23        |
| Donalda Post Office                  | 403-883-2121                 | Tarah Geer            |           |
| Donalda Tavern & Inn                 | 403-883-2044                 | Dean Norman           | 22        |
| Donalda Valley Club                  | 403-740-5997                 | Becky Halseth         |           |
| Due North Electrical                 | 403-510-7353<br>780-881-7353 | Jason Kelly           | 24        |
| East Central Alberta Heritage        | 403-872-4454                 | Rich Graydon          | 24        |
| Echo Ridge Seeds                     | 403-741-5641                 | Kirby Massey          | 24        |
| Echoglen Gardens                     | 403-883-2849                 | Roy & Beth Fulton     | 25        |



# BUSINESS DIRECTORY

| Business                     | Phone #                      | Contact            | Ad Page # |
|------------------------------|------------------------------|--------------------|-----------|
| Hair on the Hill plus Waxing | 403-740-2843<br>403-883-2469 | Mary Mueller       | 26        |
| Hang em High Exteriors       | 403-740-2472                 | Nolan Shepherd     |           |
| Hayes Contracting            | 403-916-4246                 | Chas Hayes         |           |
| John's Vending Ltd.          | 403-883-2287                 | Danny Bernard      | 26        |
| Kitchen Crumbs               | 403-741-6095                 | Amanda Knudtson    |           |
| Klatty's Welding Inc.        | 403-740-5762                 | Tracey Klatt       |           |
| Marila Environmental Inc.    | 403-883-2922                 | Marty Larson       |           |
| Prairie Wind Flowers         | 587-679-3584                 | Colleen Wainwright |           |
| RaJe Repairs                 | 604-725-6184                 | Patrick Simser     | 26        |
| Ramstad Realty               | 780-678-6405                 | Kyle Ramstad       | 27        |
| Remax 1st Choice Realty      | 403-742-6747                 | Terry Chesla       | 27        |
| Rick Shepherd Construction   | 403-741-8433                 | Rick Shepherd      | 27        |
| Rose City Memorials          | 403-742-9571                 | Wade Montgomery    | 28        |
| Russell's Hauling Ltd.       | 403-740-5518                 | Russell Speed      |           |
| Stettler Independent         | 403-742-2395                 |                    |           |
| Syban Internet               | 780-679-0345                 |                    |           |
| TC Catering                  | 403-741-6831                 | Candice Erickson   | 28        |
| The Re-Covery Room           | 403-883-2274                 | Jim & Trudy Bailey |           |
| Todds Welding                | 403-883-2570                 | Lorne Todd         |           |
| Village of Donalda           | 403-883-2345                 |                    | 16        |
| Wes Enterprises 2017 Ltd.    | 403-323-0491                 | Pat Dinsmore       | 29        |
| Wrangler Welding             | 403-588-2847                 | Curtis Fuller      |           |

# COMMUNITY ORGANIZATIONS

| Organization   | Phone #                               | Contact  | Ad Page # |
|--|---------------------------------------|--|-----------|
| Donalda & District Ag Society<br>For reservations & bookings please email donaldaagsociety@gmail.com | 780-679-4811                          | Dwayne Adams                                     | 8         |
| Donalda Equestrian Centre<br>Donalda Campground  |                                       | Donalda Community Hall<br>Willow Canyon & Chalet |           |
| Donalda & District Community<br>Promotion Society  | 780-781-0075                          | Heather Taylor                                   | 9         |
| Donalda & District Museum  | 403-883-2100                          | Zoe DeCnodder                                    | 12-13     |
| Donalda Cemetery Club  | 403-740-1372                          | Holly Komishke                                   | 9         |
| Donalda Community Arts Society   | 403-883-2100                          | Zoe DeCnodder                                    | 7         |
| Donalda Coulee Friendship Club<br>Rentals  | 403-883-2381<br>403-741-6882          | Marlene Conibear<br>Judy Dinsmore                | 6         |
| Donalda Curling Club   | 403-883-2511<br>403-741-9050          | Building<br>Mike Mueller                         | 21        |
| Donalda Floor Curling  | 403-690-1862                          | Ron Gullickson                                   |           |
| Donalda Library  | 403-430-2665                          | Library Manager                                  | 6         |
| Donalda School   | 403-883-2280                          | Julie Siemens                                    | 14-15     |
| Donalda School Parent Council  | donscc@clearview.ab.ca                |  |           |
| Donalda Fire Department  | 403-740-2876                          | Ben Wiens  |           |
| Feral Cat Network of AB  | feralcatnetworkfoundation@outlook.com | Tracy or Candace                                 |           |
| Sharon Evangelical Lutheran<br>Church  |                                       |  | 28        |
| Spruce Coulee Community Centre   | 403-883-2469                          | Mike Mueller                                     |           |

## EMERGENCY NUMBERS

|                        |                |
|------------------------|----------------|
| Apex Utilities         | 1-866-222-2067 |
| ATCO Electric          | 1-800-668-5506 |
| Donalda Village Office | 403-883-2345   |
| Fire, Medical, RCMP    | 911            |



# COMMUNITY EVENTS

## April 2025 - April 2026

|                       |  |              |
|-----------------------|--|--------------|
| May 10-11, 2025       | Mother's Trail Ride  | 403-740-5997 |
| May 10, 2025          | Drive-In Movie ""  | 780-781-0075 |
| June 14, 2025         | Donalda Ranch Rodeo  | 780-608-6511 |
| July 1, 2025          | Canada Day Festivities   | 403-883-2943 |
| July 27 - Aug 1, 2025 | Living Hope Family Bible Camp  | 403-742-9571 |
| August 9, 2025        | Donalda Coulee Show and Shine Museum Days                                      | 780-781-0075 |
| September 20, 2025    | Drive-In Movie ""  | 780-781-0075 |
| September 27-28, 2025 | Willy Bronze Poker Rally   | 403-740-5997 |
| October 25, 2025      | Donalda Ag. Fall Supper  | 403-430-0097 |
| December 7, 2025      | A Village Christmas<br>Santa Parade Christmas Market • Santa's Shopping Centre | 780-781-0075 |
| December 21, 2025     | Winter Solstice Family Activity  | 780-781-0075 |
| February 2-8, 2026    | Donalda Curling Bonspiel   | 403-741-9050 |
| February 16, 2026     | Family Day Winterfest  | 780-781-0075 |

### DONALDA RECYCLING TRAILER



The proceeds from the recycle trailer help to fund many community societies.

The Community of Donalda hosts many events and is still thriving thanks to the hard work of our volunteers.

# DONALDA COULEE FRIENDSHIP CLUB

Main Street

**\* Social Afternoons Saturdays 1:30 to 3:30  
(Sept to June)**

**\* Pancake Breakfast 10 am to 12 noon  
second Sunday of the month  
(Sept to June)**

**For Catering or Facility Booking  
Judy Dinsmore 403-741-6882 / Marlene Conibear 403-883-2381**

## Donalda Public Library

*“Committed to the Community”*

**Offering:**

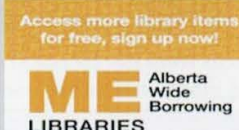
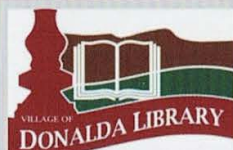
**Books, Local History Books, Movies  
Printing Services, Programs,  
Free Wi-Fi & Computer Services**



*Visit us today!*



Located in the Village Complex, 5001 Main Street 403-430-2665 txt or call  
www.donaldalibrary.prl.ab.ca e-mail: donaldalibrary@prl.ab.ca





# Donalda Gallery for the Arts



At the crossroads of creation and the appreciation of art, is the Donalda Gallery for the Arts. It is located in the historic 1928 Imperial Bank of Canada Building with a commanding view of the Meeting Creek Valley. Today, the high ceilings of the bank hall provide a wonderful gallery space for the changing exhibits of art by professional, emerging and beginning artists from Donalda and surrounding area.

The Gallery for the Arts is managed by the Donalda Community Arts Society. They are dedicated to the exploration, creation and preservation of art in any form from canvas to fabric, metal to wood and all mediums in between.

**Bashaw Art Club Exhibit**

**June 27 - July 14, 2025**

[www.donaldamuseum.com](http://www.donaldamuseum.com)

**Please check facebook at  
Donalda Gallery for the Arts  
for more exhibit dates**



## Continuing Education

The Donalda Community Arts Society is continually looking into hosting art lessons in all mediums. If you are interested in learning or teaching a discipline, please contact us.



**403-883-2100  
Box 72  
Donalda, AB  
T0B 1H0**







# Donalda & District



AGRICULTURAL SOCIETY

## Facilities

EQUESTRIAN CENTER, COMMUNITY HALL,  
CAMPGROUND, WILLOW CANYON,  
BALL DIAMONDS, SKATING RINK

## Events

CANINE AGILITY, CANADA DAY  
RANCH RODEO, TRAIL RIDES, DONALDA  
VALLEY CLUB, HARVEST SUPPER,  
CHRISTMAS MARKET  
AND MORE

## Investing in Our Community

Contact Us At:

403-741-8196 OR 403-741-2321  
[WWW.DONALDAAGSOCIETY.COM](http://WWW.DONALDAAGSOCIETY.COM)

Follow us on Facebook



# DONALDA & DISTRICT

## COMMUNITY PROMOTION SOCIETY

### MISSION

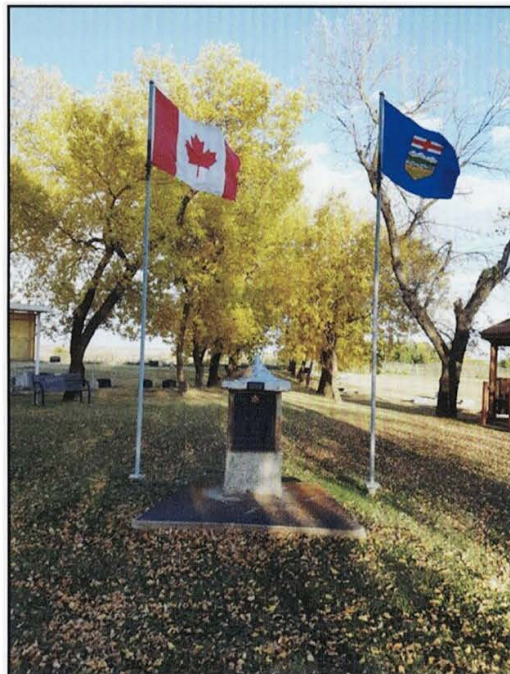
TO PROMOTE AND MARKET DONALDA AND AREA TO OTHERS AND  
OURSELVES BY:  
HOSTING COMMUNITY EVENTS LIKE FAMILY DAY, CANADA DAY, SHOW  
AND SHINE AND THE VILLAGE CHRISTMAS.  
PROVIDING A WELCOME PACKAGE TO NEW RESIDENTS.  
PUBLISHING THE BUSINESS AND TOURISM GUIDE ANNUALLY

### MEMBERS

IF YOU WOULD LIKE TO MAKE A DIFFERENCE IN OUR COMMUNITY AND  
HAVE SOME FUN DOING IT, WE WOULD LOVE TO HEAR FROM YOU. WE ARE  
ALWAYS LOOKING FOR VOLUNTEERS AND NEW MEMBERS AND IDEAS.  
MEMBERSHIP IS FREE

### PLEASE FEEL FREE TO CONTACT US AT

DONALDA BUSINESS AND TOURISM GUIDE IS PUBLISHED BY THE  
DONALDA COMMUNITY PROMOTION SOCIETY WITH THE FINANCIAL  
SUPPORT OF THE ADVERTISERS



# DONALDA CEMETERY

Box 3,  
Donalda, AB  
T0B 1H0

**403-740-1372**



# Donalda Heritage



Donalda was incorporated in 1912 at the height of the development of many small towns across Alberta as railways were built across the countryside. The first settlers to the Donalda area arrived in the 1890s.

The original Canadian Northern Railway train station was erected in 1911 but was removed and replaced by the 1909 Standard 4th class Canadian Northern Railway Station brought from Vandura, Saskatchewan. The interior of the station can be viewed by contacting the museum. It exists now exactly as it was when it closed its doors. On the north side of the train station is an original bunkhouse for the rail workers.

## The Buildings of Main Street

Main Street, Donalda, is typical of the business district of many boomtowns established during this period of rapid development. "Boomtown architecture," as it is called, is most commonly associated with the early 1900s but continued to be a popular style until the middle of the 20th century. The style was characterized by a decorative false front covering a humble, gabled building behind it, typical of many buildings in the North American west at the turn of the 20th century. The false front increased the building's presence on the street and provided a large surface area for signage. The business district of Donalda is one long street with a variety of brick and wood-frame buildings on either side.

The **Village Office/Museum/Library** complex on Main Street was originally the site of a large hotel built in 1912. It had twenty rooms and seating capacity for 100 patrons in the bar. The hotel burned down in March 1971. The **Village Office/Museum/Library** complex was built in 1980 to house the privately donated lamp collection.

On the north side of Main Street is the impressive **Imperial Bank of Canada** dating from 1928. The branch was held up by three armed men in August 1975. During the robbery, staff were locked in the vault. When the bank manager returned from lunch, he released the staff from the vault. The three bank robbers were caught and charged. It is an Alberta Heritage Registered Resource.

The **Antique Market** was built about 1916 as a store and garage.

The building housing the **Train Emporium** dates from 1925. An addition similar in design was added in 1953.

The present hotel (**Donalda Inn and Tavern**) was moved from Meeting Creek (northwest of Donalda) in the early 1970s after the original Donalda Hotel burned down. The two-storey Meeting Creek hotel was built about 1910.

The former **Donalda Youth Centre** was originally the Independent Order of Foresters (IOOF) Hall built in 1939. It also operated as a movie theatre and community hall until a larger new hall was built in 1955 (corner of Main St and Alberta Ave).

The **Community Hall**, the site of many activities from concerts to funerals, to pancake breakfasts, was built in 1954 for \$18,000.

The **Donalda Coulee Friendship Club Drop-In Centre** on the south side of the street was built in 1948 as the town fire hall and Village office until the present museum and village office complex was opened in 1980.



# Walking Tour

The fire truck from the 1940s is parked year round at the south end of the lamp park on Railway Ave.

The **Thrift Store** is the newest building on the block being built in about 2015 as Teresa's Frozen Foods.

The **Donalda Locker Plant**, a co-operative freezer facility was built in 1948.

The one storey building with a large false front, was moved from north of Donalda in 1912 to Main Street, Donalda. The original building operated as a grocery store. It has since been The Nut Cracker Sweet, Restaurant and Ice Cream Shop.

**Other sites around the Village:** Around the corner from the Museum on Railway Avenue is the **Coulee Trading Company**, **Coulee Tea House**, before that the Donalda Garage.

By the 1950s it was called Central Garage with a car dealership and BA (British American) service station.

The **original school** in Donalda was located on Bond Street on the south side of the village. Fire destroyed it in 1937. This building was replaced by a new school in 1980 (K to 9) on the corner of Haviland St. and Alberta Ave.

There have been a few **churches** in Donalda. The first Lutheran church congregation was established in 1903 before the village was incorporated. The Sharon Lutheran congregation was established in 1906. (corner of Olson St. and Lee Ave.) When the United Church, corner of Olson St. and Alberta Ave., was closed the building was moved and attached to the current Sharon Church.

The original **Donalda Creamery** (Woodland Dairy) was opened on Foster Street, a block north of Main Street, in 1924. In 1937 it became the **Donalda Co-operative Creamery**. "Donalda Maid" butter was shown across Canada at different exhibitions. The creamery operation closed in April, 1987. The creamery building is an Alberta Registered Historic Resource. This building exists now exactly as it did when it closed its doors in 1987. Tours of the Creamery can be arranged through the Museum. This building is one of only two surviving Co-op creameries in all of Alberta.

No description of Donalda is complete without telling the story of the big Lamp. The Village was looking for ideas to promote tourism when the train was still in service from Stettler.

In the year 2000, a number of community-minded individuals got together to discuss the building of a lamp replica. They fundraised \$140,000 and built this landmark which is 42 feet (12 metres) tall.

For those visitors interested in nature, the Meeting Creek Coulee, below Donalda, is a fascinating area. It is called Meeting Creek for the fact that the Cree to the north and the Blackfoot from the south frequently met here when on their buffalo hunts. The coulee (another name for valley) is the northern extension of the badlands which are more pronounced south around Drumheller and beyond, revealing unusual rock formations and fossils of dinosaurs. The coulee is a meltwater channel formed when the glaciers of the last Ice Age receded 15,000 years ago. The Village of Donalda overlooks the **Badlands** to the east of the village.

There are many century residential homes located in the Village. More information can be obtained from the Donalda Museum.

The full tour detail can be viewed on the Village of Donalda website.



# Donalda & District Museum

The Donalda & District Museum was established in 1979 with a large collection of artifacts given to the Village by local residents Don & Beth Lawson. Today, it remains our mission to maintain, preserve and exhibit artifacts to future generations for their education and enjoyment.



Our world-famous museum houses over 1,000 lamps, making it one of the largest lamp collections in the country. Most lamps are coal-oil burning from the late 1800s and early 1900s. Some lamps are hundreds of years old, few dating back to the 1500s. Many portray the daily lives of the early settlers in Alberta.



Other artifacts range from building tools to kitchen wares, household and personal items, and community memorabilia. Some artifacts are unique & rare, like a mouse-proof cabinet patented in 1881, home made mousetrap, shaving equipment, hair curling irons, a set of Norwegian wedding spoons, coins and tokens.

Western Canada in the mid-19th century was a land of great opportunities but also a land of loneliness, hardships, & danger. Nevertheless, many chose to brave these concerns & settle here.

The Whitford Collection depicts one such pioneer family. Donald Whitford, a Métis, spoke five languages and put them to use as an interpreter, freighter, trader, and surveyor. He came west in 1855 and in 1879 married a native woman, Peggy Paul. Together they had 12 children, many still living in the Donalda Area. The museum houses their personal leather and quill art.





# Unlocking the Past...Lighting the Future

The Museum also manages three historical buildings in the Village: The Donalda Co-operative Creamery, the Imperial Bank of Canada, & the Canadian Railway Station.



The Bank, originally the Bank of Montreal, was built in 1928 and became the Imperial Bank of Canada in 1932. It was open until 1997, and has since been converted into the Donalda Gallery of the Arts, holding art shows, and displays.

The Railway station a CN 4th Class building was relocated from Vandura, SK to Donalda in 1992. The original Donalda station was built in 1911, but was torn down.

The Creamery began in 1924 but was replaced by the present building in 1954 until it closed in 1987. The equipment was left just as it was on its last day of operation. The Creamery was noted for its "Donalda Maid Butter" which won many awards across Canada. The creamery is



a provincial heritage Resource.

When Donalda began the new millennium the World's Largest replica of a Coal-Oil Burning Lamp was erected, complementing the museum and its lamp collection. The lamp was a model of community



volunteerism. When it was completed on July 1st, 2000, a new era with a tourism-based economy began.

Today, we are proud of our accomplishments & the efforts to develop events & attractions in our community. The Museum reflects the whole history of the community & the district, from the prehistoric past to the present.

## Contact Information:

Box 179, Donalda, AB T0B 1H0

email: [info@donaldamuseum.com](mailto:info@donaldamuseum.com)

Phone: 403-883-2100 [www.donaldamuseum.com](http://www.donaldamuseum.com)



# Donalda School

# EAGLES



- ✓ Academics
- ✓ Athletics
- ✓ Fine Arts
- ✓ Technology
- ✓ Play School to Grade 9

**REGISTER ONLINE**



[www.donalda.clearview.ab.ca](http://www.donalda.clearview.ab.ca)



[donoffice@clearview.ab.ca](mailto:donoffice@clearview.ab.ca)



403-883-2280

# *Empowering Students. Soaring to Success.*





# VILLAGE OF DONALDA

P.O. Box 160  
5001 Main Street  
Donalda, AB  
T0B1H0

[www.villageofdonalda.ab.ca](http://www.villageofdonalda.ab.ca)  
403-883-2345

The Village of Donalda sits at the northern edge of the Canadian Badlands, overlooking the Meeting Creek Coulee. This spot offers stunning views of one of Alberta's most famous landscapes. It's a great place for artists, photographers, hikers, and nature lovers. You can enjoy the hiking trail that runs along the coulee rim and leads down to Willow Canyon. This scenic area is also home to Donalda's tourism highlight, the world's largest oil lamp replica, which lights up the night sky, along with the well-known museum it represents. The village was originally named Eidswold by Norwegian settlers who established the community around 1909. On December 31, 1912, it was renamed Donalda after the Donalda Crossway, the niece of Sir Donald A Mann, a key figure in the Canadian National Railway.



Donalda values its history and showcases it through various historical buildings, including the 1932 Imperial Bank building and the restored 1909 CN Railway Station. The community thrives thanks to dedicated volunteers who take pride in its historical and agricultural heritage.

The energy of Donalda is shown in the many businesses in the Village and nearby areas. These include shops for antiques, art, hotels, cafes, catering, hair services, gardening, upholstery, transportation, animal care, and more.

There are many unique finds waiting to be discovered. In this small, tight-knit community, neighbors support one another, and families can raise their children in a safe environment. The school has evolved from a one-room building in the 1920s to a K-Grade 9 institution today. The school staff and community work hard to ensure that all students receive a quality education in a caring setting. Donalda is dedicated to creating a safe, welcoming, and affordable place for both current and future generations.

*You'll Love it Here!*





---

FOR SALE

ALBERTA



REALTY

TY WILSON 780 781 7144

---

# ATHAE Massage & Wellness

Customized Massage Therapy Treatments  
by Debie Parenteau, R.M.T., B.Ed

780 -722 - 5274

Donalda, Alberta

\$10.00 Off of Your First Massage



Overlooking the Majestic Coulee Across from Donalda



## Ben Van Haga Trucking

*Specializing in Hauling*

*\* Grain \* Fertilizer \* Hay*

Box 1899

Stettler, AB T0C 2L0

Cell: 403-323-0060

Email: [benvanhaga@hotmail.com](mailto:benvanhaga@hotmail.com)



# BIG KNIFE

**Bob Halseth**  
Serving the community  
for over 35 years



# CONSTRUCTION

403-883-2205 Cell 403-740-9469

[www.bigknifeconstruction.com](http://www.bigknifeconstruction.com)

New Homes, Renovations, Farm Buildings, Windows, Siding, Shingles, Hardwood and Tiles





Cabin Rentals & Weekend Getaways  
**Phone 403-740-6699**

## *Black Sheep Designs*

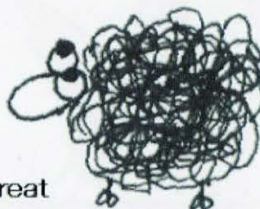
Hand felted artisanal goods by Becky Halseth

403.740.5997

Donalda, Alberta.

[beckyhalseth@gmail.com](mailto:beckyhalseth@gmail.com)

Felting Workshops and Country Retreat



## **BROUGHTON**

**GASFITTING & SERVICES LTD.**

780-608-4333

**SCOTT BROUGHTON**

Journeyman Gasfitter

- Furnace service/repair • Heater installation
- Hot water tank installation/repair • Gas lines

[broughton.gasfitting@gmail.com](mailto:broughton.gasfitting@gmail.com) | RR 1 Donalda, AB T0B 1H0

## COULEE Tea House 2023

10 a.m. to 4 p.m.

**Closed Sundays & Wednesdays**

*Fresh sandwiches, salads, desserts  
made in store daily*

*Tuesday and Thursday are Fresh Donut Days*

*Large variety of high quality loose teas*



**403-883-2755 Karl & Judy Torkelson**

**404 Railway Ave., Donalda, Alberta**



*Creations By Granny T.*

*Teresa Donald*

Box 131 Donalda, AB T0B 1H0

403.740.6088

creationsbygrannnyt@gmail.com

*Chunky Hand Knit Blankets,  
Merino Wool, Chenille & Loop Yarn*

## Custom Cut & Fabricating



- Custom Design  
& Fabrication
- Shape Cutting
- Call us for your  
next project!

**Lane: 403-883-2362**





## Donalda Curling Club

Mixed Curling League  
(January to March)

All interested players welcome  
from beginners to professionals.

Annual Curling Bonspiel  
takes place in February.

### RENTALS

\$100.00 - Day

Lobby Rentals all year round

*Curling is Sweeping Our Town!*

For more info. please call  
403-883-9050

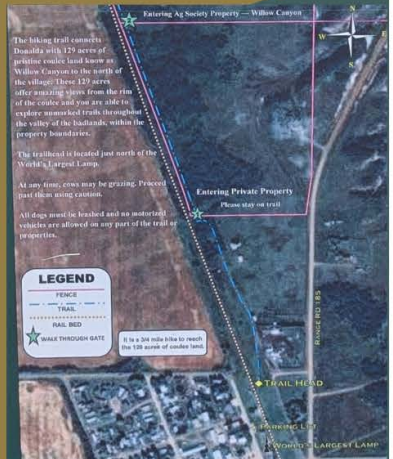
# Willow Canyon HIKING TRAIL

Explore Willow Canyon  
and the Donalda Coulee!



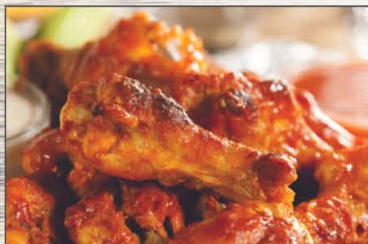
Pack a picnic, bring sunscreen, water and  
bug spray, and get acquainted with this  
unique, natural playground.

The trail is also open during the winter for  
cross-country skiing enthusiasts.



# DONALDA TAVERN & INN

403-883-2044



Join us

**Wednesday &  
Saturday nights  
for Wing Night**

5 p.m. to 10 p.m.

and

**Friday night  
for Steak Night**

6 p.m. to 9 p.m.

**Please make reservations for these nights**

"Enjoy a stay in our newly renovated rooms"



403.991.1881

•  
[chrissrr@gmail.com](mailto:chrissrr@gmail.com)

[BCMsolutions@facebook.com](https://www.facebook.com/BCMsolutions)

*Check in and View the Action!*

•  
Full-service **general contractor**

specializing in **remodelling,**  
**restoration,** and **renovation**



**Creations with Yarn**



**Donalda, AB**



**780-781-0075**



[hmtmerch@syban.net](mailto:hmtmerch@syban.net)

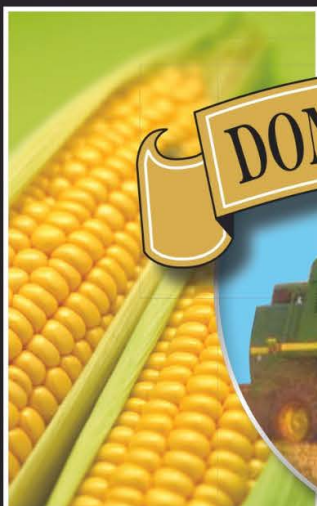


Find us on **facebook**  
**Coulee Yarn Designs**





# FARM



## DONALDA COLONY



# FRESH

For farm fresh, locally produced

Vegetables contact Luke at 403-740-3547

Chickens contact Mike at 403-916-4352

Eggs contact Rubin at 403-741-4125



**780-881-7353**

**DUE NORTH  
ELECTRICAL**

**403-510-7353**

**Serving all your Electrical needs**

We Are Proud and Honoured to Support Tourism in Donalda and District

## **East Central Alberta Heritage Society**

*"Dedicated to the preservation  
of railroad heritage"*



**For Information or  
To Volunteer 403-742-3997**

**[www.albertarailheritage.com](http://www.albertarailheritage.com)**

*Together we can restore rail to Donalda*

# **ECHO RIDGE SEEDS**

**Derwin & Kirby Massey**  
Box 534, Stettler, Alberta T0C2L0

**Tel: 403-883-2503**

**Derwin - Cell: 403-741-6464**

**Kirby - Cell: 403-741-5641**

**Visit our website for all varieties  
at [www.echoridgeseeds.com](http://www.echoridgeseeds.com)**

### **PEAS**

Meadow  
Carver

### **WHEAT**

AAC  
Viewfield  
Brandon  
AAC  
Wheatland

### **BARLEY**

Austenson  
Copeland  
ACC Connect  
Esma

Seed Treatments Available

**SeCan**



**FP-GENETICS**





SEVENTY  
YEARS OF  
SERVICE  
1955 - 2025

**Proud to play a  
supporting role.**

403.742.4441  
info@stettlercounty.ca  
www.StettlerCounty.ca

# Echoglen

## GARDENS

*Solutions for Everyday Gardening*

Home Grown Annuals & Perennials  
Prairie Hardy Quality Trees, Shrubs & Fruit

403-741-8196

2 Miles south of Donald  
www.echoglengardens.com

# Hair on the Hill

"Hair care for the entire family at great prices"



Cuts • Perms • Colours  
Foils • Waxing

Mary Mueller, Owner-Operator

403.883.2469

cell: 403.740.2843

3 miles East of Donalda on #53

## jvl John's Vending Ltd.

Specializing in

★ Pool Tables

★ Amusement Games ★ Internet Juke Boxes

**Danny Bernard**

Box 59

Donalda, AB T0B 1H0

[www.johnsvending.ca](http://www.johnsvending.ca)

**403.883.2444**

Bus: 403.883.2287

[jvldonalda@gmail.com](mailto:jvldonalda@gmail.com)

## SPECIALIZING IN RESTORATION AND JANITORIAL EQUIPMENT REPAIRS

CALL 604-725-6184  
OR EMAIL  
[INFO@RAJEREPAIRS.COM](mailto:INFO@RAJEREPAIRS.COM)



**RāJE**  
REPAIRS

SERVING 5 MILE  
CORNER AND  
BEYOND

**INCLUDING CENTRAL VACUUMS,  
CARPET CLEANERS AND  
DEHUMIDIFIERS**



# RAMSTAD REALTY INC

Ph: 780-678-6405

Box 412

Bashaw, AB T0B 0H0

Email: ramstadrealty@gmail.com

Website: www.ramstadrealty.ca



**Kyle Ramstad**  
Broker



## RE/MAX

1ST CHOICE REALTY



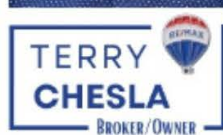
RESIDENTIAL  
AGRICULTURAL  
COMMERCIAL

📞 403.742.7626 | 403.742.6747

✉ terrychesla@remax.net

📍 5807 50 Ave, Stettler

🌐 terrychesla.stettlerrealtors.com

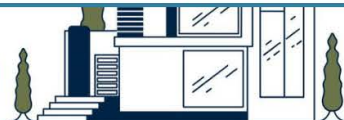


\*Locally owned and operated

# RICK SHEPERD CONSTRUCTION

**CARPENTERS AND HOUSE BUILDERS**  
**RESIDENTIAL, COMMERCIAL, FARM,**  
**RENOVATIONS**

**RICK SHEPERD 403-741-8433**  
**NOLAN SHEPERD 403-740-2472**



# Rose City Memorials Ltd.

## Wade Montgomery

Serving the Community since 1992

403-742-9571

*A memorial is a lasting symbol of how  
important loved ones are.*

*It would be a privilege to serve you*



## SHARON

*Evangelical Lutheran Church*

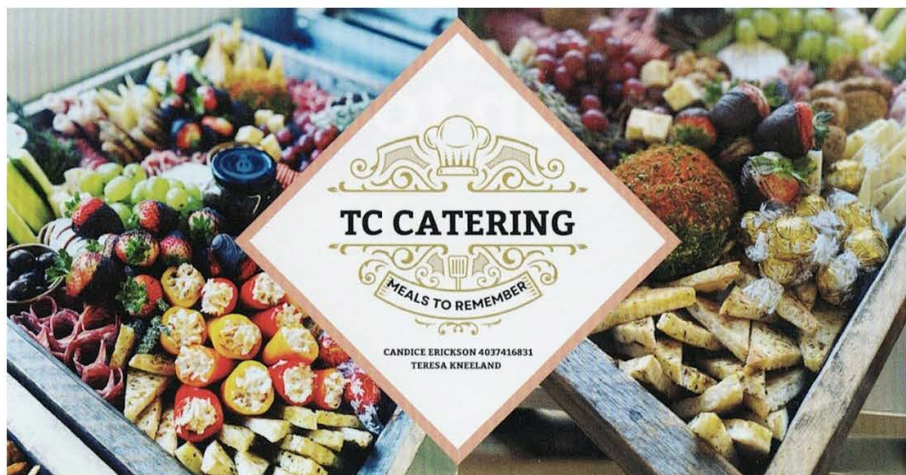


SUNDAY SERVICE & SUNDAY SCHOOL 10AM

**A WORSHIPPING, LEARNING,  
WITNESSING AND SERVING  
COMMUNITY**

3117 OLSON STREET, DONALDA  
SHARONDONALDA.COM

**LIVING HOPE  
FAMILY BIBLE  
CAMP  
JULY 27TH TO  
AUGUST 1ST AT  
DEER VALLEY  
MEADOWS,  
ALIX, AB.  
FOR INFO  
CONTACT  
WADE  
MONTGOMERY  
403-742-9571**



CANDICE ERICKSON 4037416831  
TERESA KNEELAND





## WES ENTERPRISE 2017 LTD

TANK TRUCK SERVICE

OWNER OPERATOR - PAT DINSMORE 403-323-0491

## Help Us Bring The Train Back To Donalda



Laying 'Tie to Red Willow  
Fall 2009



1909 Rebuilt CN Rail Station

Alberta Heritage Steam Train  
going through  
Morning Creek Valley



Funds are still needed to complete the rail road from Red Willow to Donalda. We have the station, now all we need is the rails. Big Valley has seen growth in business and residents due to the tourist economy that the train brings. The Village of Donalda would benefit greatly as well. Before the unfortunate removal of the rails, Donalda tourism prospered and flourished. The train brought people from near and far. There is no other tourist attraction quite like it. The train experience is known internationally. Let's share the dream, for more information please contact 403-742-3997 or visit [www.albertaallheritage.com](http://www.albertaallheritage.com).

*If We Build It, They Will Come...*



**Sponsored by Donalda & Community Promotions Society**

**Saturday, August 9, 2025 10:00 am - 2:00 pm**

**At the World Famous Lamp - Donalda, Alberta**

*Everyone welcome*

**Cars, Trucks, Motorcycles, Snowmobiles and more!**

**Food Truck**

**For more info contact Heather 780-781-0075 cell  
hmtmerch@syban.net**

# *Donalda Canada Day Celebration*

*July 1, 2025*

**Pancake Breakfast**

**Pie & Coffee**

**Multiple Food Locations**

**Family Entertainment by the Lamp**

**Parade**

**Fireworks!**

**AG Society 50th Celebration**

**Karaoke at Donalda Tavern**

**Live Band**

**More to Come!**